

ENVIROSERVER - ES SERIES ES7.5

DESCRIPTION:

PRIMARY AND SECONDARY WASTEWATER TREATMENT DEVICE USING BOTH FIXED FILM AND SUSPENDED GROWTH WITH MULTI-STAGE AEROBIC PROCESS. TANK CAPACITIES LISTED ARE FOR STANDARD UNITS

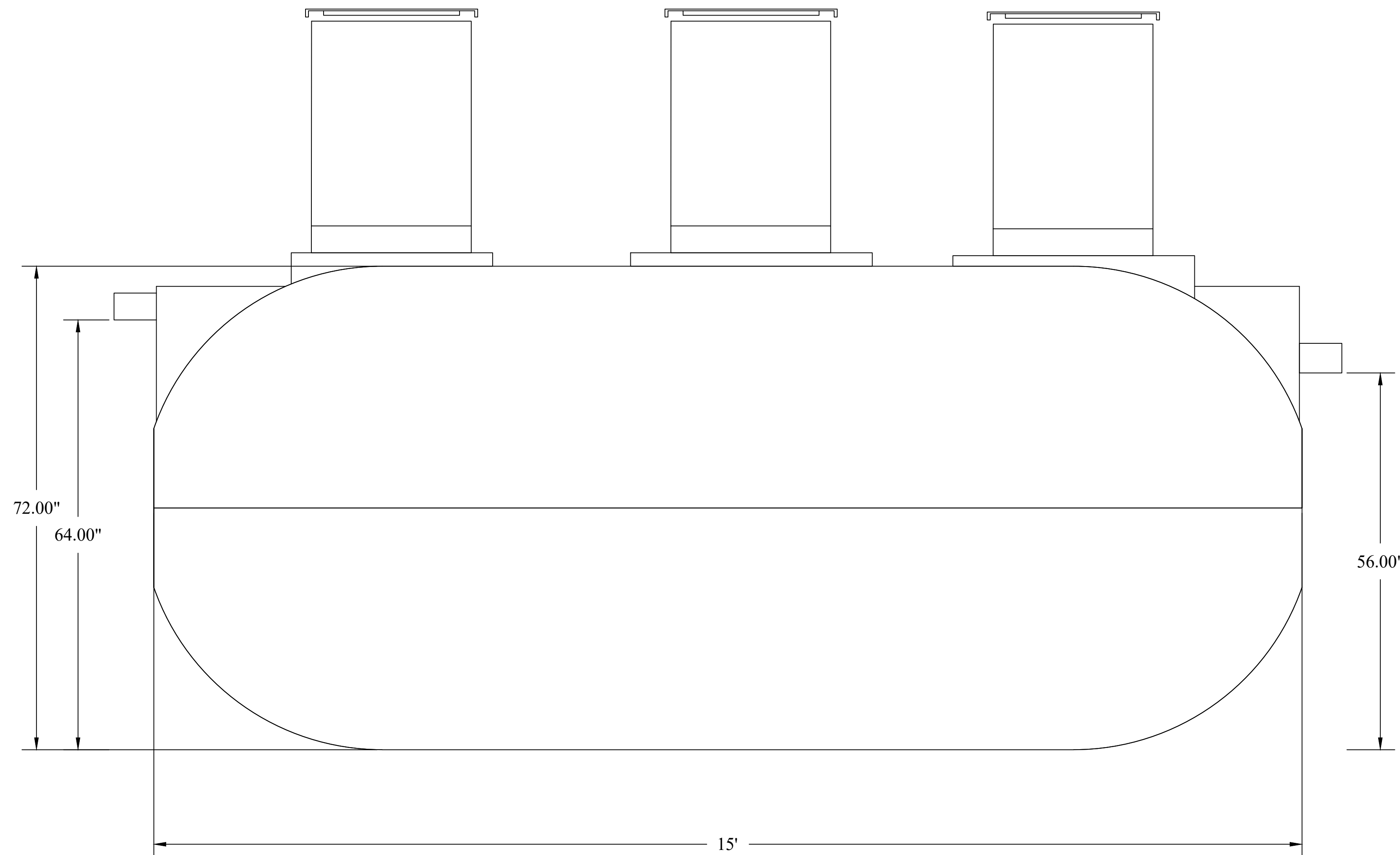


31 AFFONSO DRIVE
MOUND HOUSE, NV 89706
1(877)-4SEPTIC [1(877)473-7842]
WWW.MICROSEPTEC.COM

NOTES

- GENERAL:
1. THE MIDDLE THREE CHAMBERS SHOULD NEVER BE PUMPED DRY, ESPECIALLY IN HIGH GROUNDWATER CONDITIONS
 2. RISERS AND RISER ADAPTERS NOT SUPPLIED BY MICROSEPTEC
 3. PLUMBING DIMENSIONS FROM OUTSIDE EDGE OF TANK TO INVERT OF INLET AND OUTLET
 4. CONTRACTOR TO PROVIDE ADDITIONAL PLUMBING FOR ANY BURIAL DEPTH GREATER THAN 4FT
 5. SITE-SPECIFIC CHARACTERISTICS INCLUDING BUT NOT LIMITED TO: BURIAL DEPTH, TRAFFIC OR OTHER EXTERNAL LOADING, SEASONAL GROUNDWATER, AND SOIL CHARACTERISTICS SHOULD BE CONFIRMED WITH A LOCAL DESIGN ENGINEER BEFORE INSTALLATION
- TANK BURIAL:
6. THE DESIGNED TANK BURIAL DEPTH IS 2FT TO 6FT. ANY TANK BURIED BEYOND THAT RANGE MUST BE ANALYZED BY A LOCAL DESIGN ENGINEER
 7. COVER TO BE A MINIMUM OF 2FT.
 8. ENGINEERED BACKFILL TO BE A MINIMUM OF 12" ALONG SIDES AND BOTTOM OF TANK
 9. GEOLOGIST OR GEOTECHNICAL ENGINEER TO DETERMINE IF ANCHORS AND TEXTILE FILTER ARE REQUIRED.
 10. DEPTH OF SOIL SLOPE CUT PER LOCAL CODE OR SOIL REPORT
 11. VERTICAL CUT FOR FILL HEIGHT CAN BE DONE IF APPROVED BY LOCAL CODE OR SOIL ENGINEER
 12. GEOLOGIST OR GEOTECH ENGINEER SHOULD DETERMINE IF CORROSIVE RESISTANT MATERIAL SHOULD BE USED IN ANY STEEL PARTS EXPOSED IN THE SOIL.

DESIGN TREATMENT CAPACITY (gpd)	750
TOTAL TANK CAPACITY (gal)	2500
TOTAL LENGTH	15'-0"
DIAMETER (in.)	72
INLET HEIGHT (in.)	64
OUTLET HEIGHT (in.)	56



DRAWN:	DATE:	JOB NUMBER:
AJM	2/10/21	ES7.5

REVISION:		
REVISION:	DATE: BY:	DESCRIPTION:

SITE INFORMATION:

ES 7.5
ENVIROSERVER
ADVANCED WASTEWATER
TREATMENT SYSTEM

SHEET TITLE:

ES7.5

SHEET NUMBER:

1 OF 1

ENVIROSERVER - ES SERIES ES7.5-GRAV/SOL-MST



31 AFFONSO DRIVE
 MOUND HOUSE, NV 89706
 1(877)-4SEPTIC [1(877)473-7842]
 WWW.MICROSEPTEC.COM

DESCRIPTION:

PRIMARY AND SECONDARY WASTEWATER TREATMENT DEVICE USING BOTH FIXED FILM AND SUSPENDED GROWTH WITH MULTI-STAGE AEROBIC PROCESS. TANK CAPACITIES LISTED ARE FOR STANDARD UNITS

NOTES

- GENERAL:**
- THE MIDDLE THREE CHAMBERS SHOULD NEVER BE PUMPED DRY, ESPECIALLY IN HIGH GROUNDWATER CONDITIONS
 - RISERS AND RISER ADAPTERS NOT SUPPLIED BY MICROSEPTEC
 - PLUMBING DIMENSIONS FROM OUTSIDE EDGE OF TANK TO INVERT OF INLET AND OUTLET
 - CONTRACTOR TO PROVIDE ADDITIONAL PLUMBING FOR ANY BURIAL DEPTH GREATER THAN 4FT
 - SITE-SPECIFIC CHARACTERISTICS INCLUDING BUT NOT LIMITED TO: BURIAL DEPTH, TRAFFIC OR OTHER EXTERNAL LOADING, SEASONAL GROUNDWATER, AND SOIL CHARACTERISTICS SHOULD BE CONFIRMED WITH A LOCAL DESIGN ENGINEER BEFORE INSTALLATION

- TANK BURIAL:**
- THE DESIGNED TANK BURIAL DEPTH IS 2FT TO 6FT. ANY TANK BURIED BEYOND THAT RANGE MUST BE ANALYZED BY A LOCAL DESIGN ENGINEER
 - COVER TO BE A MINIMUM OF 2FT.
 - ENGINEERED BACKFILL TO BE A MINIMUM OF 12" ALONG SIDES AND BOTTOM OF TANK
 - GEOLOGIST OR GEOTECHNICAL ENGINEER TO DETERMINE IF ANCHORS AND TEXTILE FILTER ARE REQUIRED.
 - DEPTH OF SOIL SLOPE CUT PER LOCAL CODE OR SOIL REPORT
 - VERTICAL CUT FOR FILL HEIGHT CAN BE DONE IF APPROVED BY LOCAL CODE OR SOIL ENGINEER
 - GEOLOGIST OR GEOTECH ENGINEER SHOULD DETERMINE IF CORROSIVE RESISTANT MATERIAL SHOULD BE USED IN ANY STEEL PARTS EXPOSED IN THE SOIL

DESIGN TREATMENT CAPACITY (gpd)	750
TOTAL TANK CAPACITY (gal)	2500
TOTAL LENGTH	15'-0"
DIAMETER (in.)	72
INLET HEIGHT (in.)	64
OUTLET HEIGHT (in.)	56
BIOMEDIA VOLUME (cu.ft.)	30
AIR DIFFUSER	2-EDI FINE BUBBLE
AIR COMPRESSOR	HIBLOW HP150
RECIRCULATION CONTROL	SOLENOID
ALARM CONTROL PANEL	MCPR-G
TELEMETRY	OPTIONAL

DRAWN:	DATE:	JOB NUMBER:
AJM	2/10/21	ES7.5

REVISION:		
REVISION:	DATE:	DESCRIPTION:
	BY:	

SITE INFORMATION:

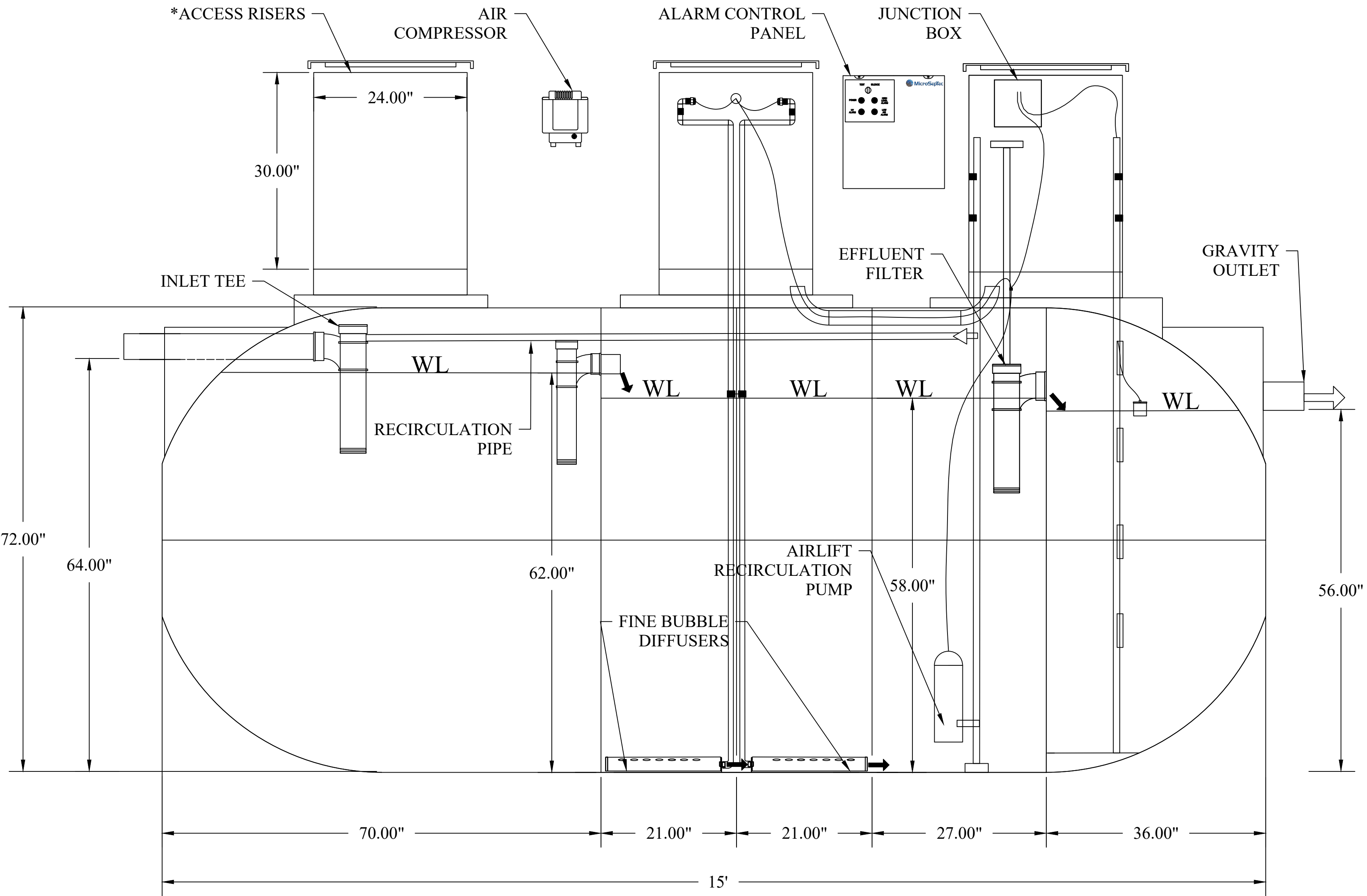
ES 7.5
 ENVIROSERVER
 ADVANCED WASTEWATER
 TREATMENT SYSTEM

SHEET TITLE:

ES7.5-GRAV/SOL-MST

SHEET NUMBER:

1 OF 1



ES7.5 CHAMBER VOLUMES				
PRIMARY SETTLING	AERATION 1	AERATION 2	CLARIFIER	PUMP CHAMBER
950	320	320	410	367

NOTES:

*MATERIALS NOT SUPPLIED BY MICROSEPTEC

ENVIROSERVER - ES SERIES ES7.5-GRAV/SOL

MicroSeptec
 31 AFFONSO DRIVE
 MOUND HOUSE, NV 89706
 1(877)-4SEPTIC [1(877)473-7842]
 WWW.MICROSEPTEC.COM

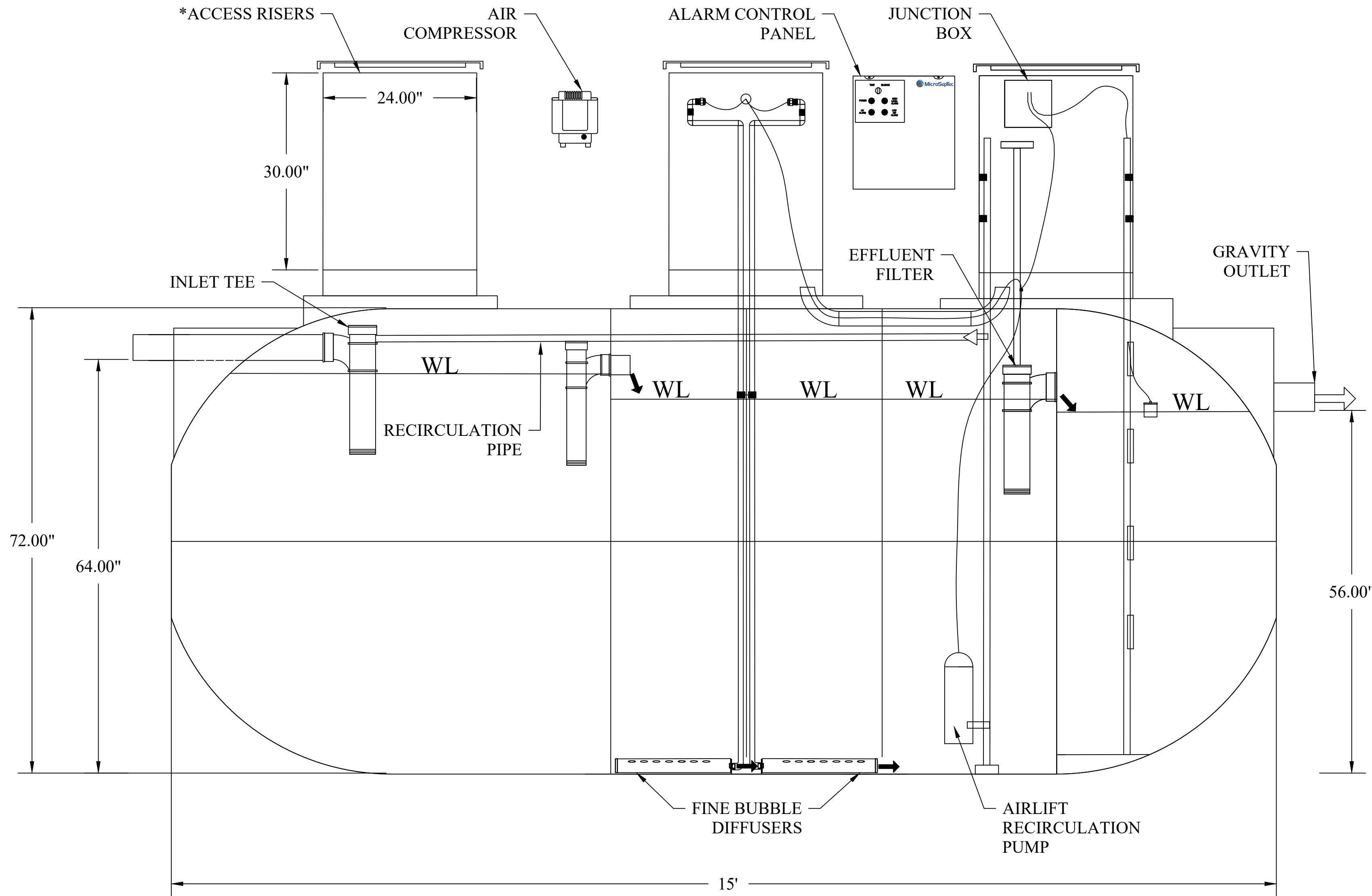
DESCRIPTION:

PRIMARY AND SECONDARY WASTEWATER TREATMENT DEVICE USING BOTH FIXED FILM AND SUSPENDED GROWTH WITH MULTI-STAGE AEROBIC PROCESS. TANK CAPACITIES LISTED ARE FOR STANDARD UNITS

NOTES

- GENERAL:**
- THE MIDDLE THREE CHAMBERS SHOULD NEVER BE PUMPED DRY, ESPECIALLY IN HIGH GROUNDWATER CONDITIONS
 - RISERS AND RISER ADAPTERS NOT SUPPLIED BY MICROSEPTEC
 - PLUMBING DIMENSIONS FROM OUTSIDE EDGE OF TANK TO INVERT OF INLET AND OUTLET
 - CONTRACTOR TO PROVIDE ADDITIONAL PLUMBING FOR ANY BURIAL DEPTH GREATER THAN 4FT
 - SITE-SPECIFIC CHARACTERISTICS INCLUDING BUT NOT LIMITED TO: BURIAL DEPTH, TRAFFIC OR OTHER EXTERNAL LOADING, SEASONAL GROUNDWATER, AND SOIL CHARACTERISTICS SHOULD BE CONFIRMED WITH A LOCAL DESIGN ENGINEER BEFORE INSTALLATION

- TANK BURIAL:**
- THE DESIGNED TANK BURIAL DEPTH IS 2FT TO 6FT. ANY TANK BURIED BEYOND THAT RANGE MUST BE ANALYZED BY A LOCAL DESIGN ENGINEER
 - COVER TO BE A MINIMUM OF 2FT.
 - ENGINEERED BACKFILL TO BE A MINIMUM OF 12" ALONG SIDES AND BOTTOM OF TANK
 - GEOLOGIST OR GEOTECHNICAL ENGINEER TO DETERMINE IF ANCHORS AND TEXTILE FILTER ARE REQUIRED.
 - DEPTH OF SOIL SLOPE CUT PER LOCAL CODE OR SOIL REPORT
 - VERTICAL CUT FOR FILL HEIGHT CAN BE DONE IF APPROVED BY LOCAL CODE OR SOIL ENGINEER
 - GEOLOGIST OR GEOTECH ENGINEER SHOULD DETERMINE IF CORROSIVE RESISTANT MATERIAL SHOULD BE USED IN ANY STEEL PARTS EXPOSED IN THE SOIL



DESIGN TREATMENT CAPACITY (gpd)	750
TOTAL TANK CAPACITY (gal)	2500
TOTAL LENGTH	15'-0"
DIAMETER (in.)	72
INLET HEIGHT (in.)	64
OUTLET HEIGHT (in.)	56
BIOMEDIA VOLUME (cu.ft.)	30
AIR DIFFUSER	2-EDI FINE BUBBLE
AIR COMPRESSOR	HIBLOW HP150
RECIRCULATION CONTROL	SOLENOID
ALARM CONTROL PANEL	MCPR-G
TELEMETRY	OPTIONAL

DRAWN:	DATE:	JOB NUMBER:
AJM	2/10/21	ES7.5

REVISION:		
REVISION:	DATE:	DESCRIPTION:
	BY:	

SITE INFORMATION:

ES 7.5
 ENVIROSERVER
 ADVANCED WASTEWATER
 TREATMENT SYSTEM

SHEET TITLE:

ES7.5-GRAV/SOL

SHEET NUMBER:

1 OF 1

NOTES:

*MATERIALS NOT SUPPLIED BY MICROSEPTEC

ENVIROSERVER - ES SERIES ES7.5-GRAV/SOL/UV



31 AFFONSO DRIVE
MOUND HOUSE, NV 89706
1(877)-4SEPTIC [1(877)473-7842]
WWW.MICROSEPTEC.COM

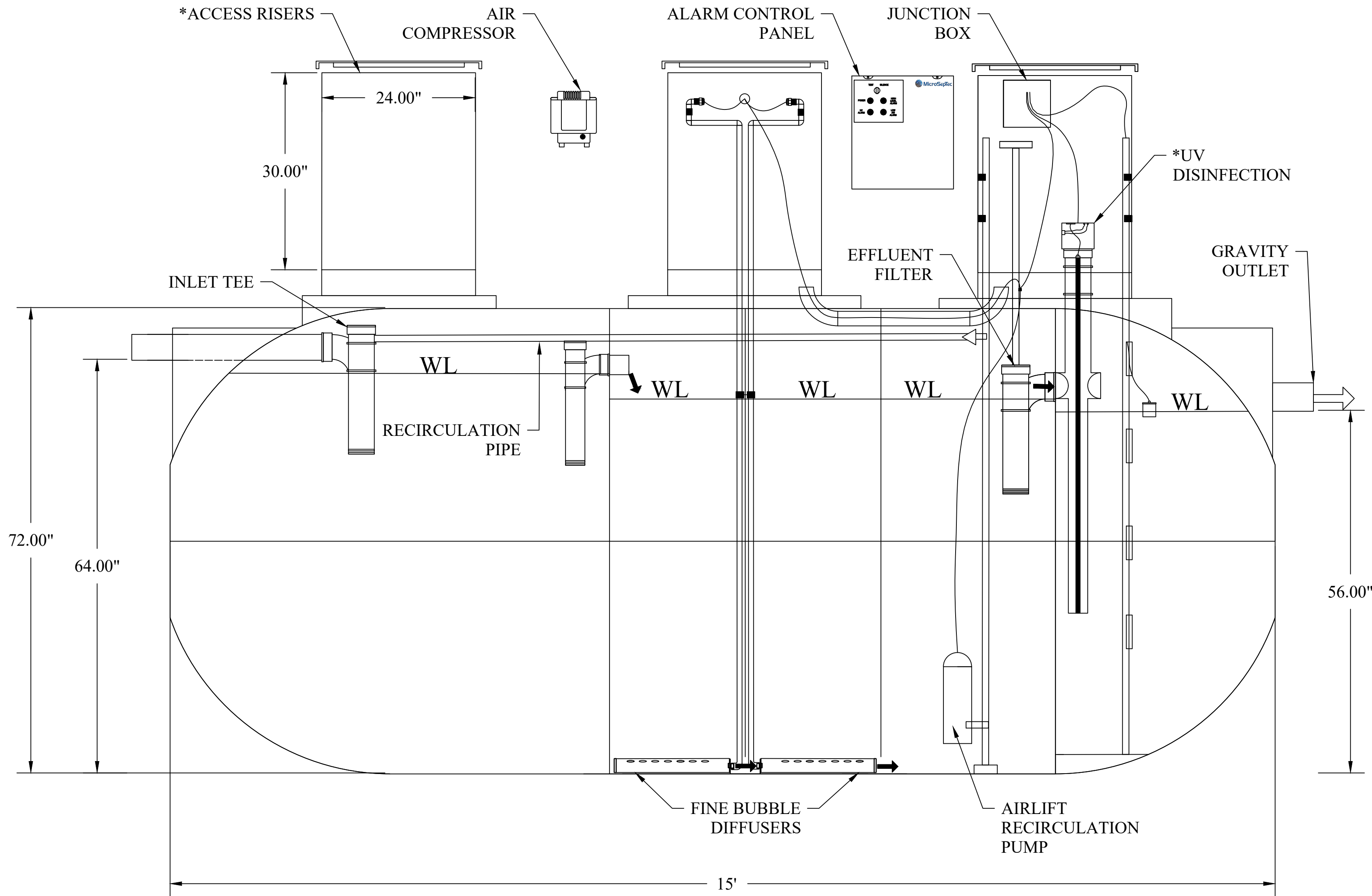
DESCRIPTION:

PRIMARY AND SECONDARY WASTEWATER TREATMENT DEVICE USING BOTH FIXED FILM AND SUSPENDED GROWTH WITH MULTI-STAGE AEROBIC PROCESS. TANK CAPACITIES LISTED ARE FOR STANDARD UNITS

NOTES

- GENERAL:
1. THE MIDDLE THREE CHAMBERS SHOULD NEVER BE PUMPED DRY, ESPECIALLY IN HIGH GROUNDWATER CONDITIONS
 2. RISERS AND RISER ADAPTERS NOT SUPPLIED BY MICROSEPTEC
 3. PLUMBING DIMENSIONS FROM OUTSIDE EDGE OF TANK TO INVERT OF INLET AND OUTLET
 4. CONTRACTOR TO PROVIDE ADDITIONAL PLUMBING FOR ANY BURIAL DEPTH GREATER THAN 4FT
 5. SITE-SPECIFIC CHARACTERISTICS INCLUDING BUT NOT LIMITED TO: BURIAL DEPTH, TRAFFIC OR OTHER EXTERNAL LOADING, SEASONAL GROUNDWATER, AND SOIL CHARACTERISTICS SHOULD BE CONFIRMED WITH A LOCAL DESIGN ENGINEER BEFORE INSTALLATION

- TANK BURIAL:
6. THE DESIGNED TANK BURIAL DEPTH IS 2FT TO 6FT. ANY TANK BURIED BEYOND THAT RANGE MUST BE ANALYZED BY A LOCAL DESIGN ENGINEER
 7. COVER TO BE A MINIMUM OF 2FT.
 8. ENGINEERED BACKFILL TO BE A MINIMUM OF 12" ALONG SIDES AND BOTTOM OF TANK
 9. GEOLOGIST OR GEOTECHNICAL ENGINEER TO DETERMINE IF ANCHORS AND TEXTILE FILTER ARE REQUIRED.
 10. DEPTH OF SOIL SLOPE CUT PER LOCAL CODE OR SOIL REPORT
 11. VERTICAL CUT FOR FILL HEIGHT CAN BE DONE IF APPROVED BY LOCAL CODE OR SOIL ENGINEER
 12. GEOLOGIST OR GEOTECH ENGINEER SHOULD DETERMINE IF CORROSIVE RESISTANT MATERIAL SHOULD BE USED IN ANY STEEL PARTS EXPOSED IN THE SOIL



DESIGN TREATMENT CAPACITY (gpd)	750
TOTAL TANK CAPACITY (gal)	2500
TOTAL LENGTH	15'-0"
DIAMETER (in.)	72
INLET HEIGHT (in.)	64
OUTLET HEIGHT (in.)	56
BIOMEDIA VOLUME (cu.ft.)	30
AIR DIFFUSER	2-EDI FINE BUBBLE
AIR COMPRESSOR	HIBLOW HP150
RECIRCULATION CONTROL	SOLENOID
ALARM CONTROL PANEL	MCPR-G
TELEMETRY	OPTIONAL
DISINFECTION	SALCOR 3G

DRAWN:	DATE:	JOB NUMBER:
AJM	2/10/21	ES7.5

REVISION:		
REVISION:	DATE:	DESCRIPTION:
	BY:	

SITE INFORMATION:

ES 7.5
ENVIROSERVER
ADVANCED WASTEWATER
TREATMENT SYSTEM

SHEET TITLE:

ES7.5-GRAV/SOL/UV

SHEET NUMBER:

1 OF 1

NOTES:

*MATERIALS NOT SUPPLIED BY MICROSEPTEC

ENVIROSERVER - ES SERIES ES7.5-GRAV/NV



31 AFFONSO DRIVE
MOUND HOUSE, NV 89706
1(877)-4SEPTIC [1(877)473-7842]
WWW.MICROSEPTEC.COM

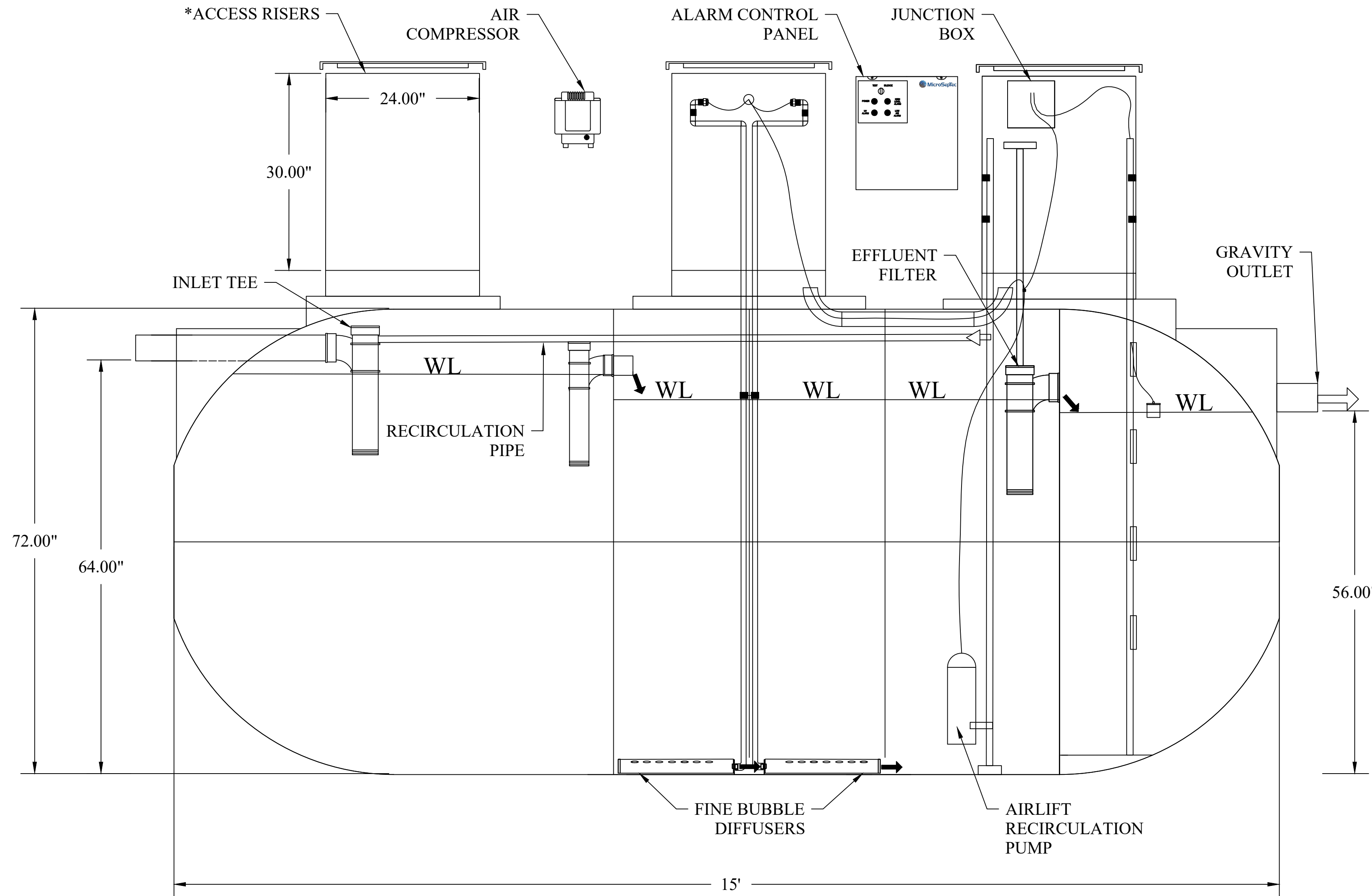
DESCRIPTION:

PRIMARY AND SECONDARY WASTEWATER TREATMENT DEVICE USING BOTH FIXED FILM AND SUSPENDED GROWTH WITH MULTI-STAGE AEROBIC PROCESS. TANK CAPACITIES LISTED ARE FOR STANDARD UNITS

NOTES

- GENERAL:
- THE MIDDLE THREE CHAMBERS SHOULD NEVER BE PUMPED DRY, ESPECIALLY IN HIGH GROUNDWATER CONDITIONS
 - RISERS AND RISER ADAPTERS NOT SUPPLIED BY MICROSEPTEC
 - PLUMBING DIMENSIONS FROM OUTSIDE EDGE OF TANK TO INVERT OF INLET AND OUTLET
 - CONTRACTOR TO PROVIDE ADDITIONAL PLUMBING FOR ANY BURIAL DEPTH GREATER THAN 4FT
 - SITE-SPECIFIC CHARACTERISTICS INCLUDING BUT NOT LIMITED TO: BURIAL DEPTH, TRAFFIC OR OTHER EXTERNAL LOADING, SEASONAL GROUNDWATER, AND SOIL CHARACTERISTICS SHOULD BE CONFIRMED WITH A LOCAL DESIGN ENGINEER BEFORE INSTALLATION

- TANK BURIAL:
- THE DESIGNED TANK BURIAL DEPTH IS 2FT TO 6FT. ANY TANK BURIED BEYOND THAT RANGE MUST BE ANALYZED BY A LOCAL DESIGN ENGINEER
 - COVER TO BE A MINIMUM OF 2FT.
 - ENGINEERED BACKFILL TO BE A MINIMUM OF 12" ALONG SIDES AND BOTTOM OF TANK
 - GEOLOGIST OR GEOTECHNICAL ENGINEER TO DETERMINE IF ANCHORS AND TEXTILE FILTER ARE REQUIRED.
 - DEPTH OF SOIL SLOPE CUT PER LOCAL CODE OR SOIL REPORT
 - VERTICAL CUT FOR FILL HEIGHT CAN BE DONE IF APPROVED BY LOCAL CODE OR SOIL ENGINEER
 - GEOLOGIST OR GEOTECH ENGINEER SHOULD DETERMINE IF CORROSIVE RESISTANT MATERIAL SHOULD BE USED IN ANY STEEL PARTS EXPOSED IN THE SOIL



DESIGN TREATMENT CAPACITY (gpd)	750
TOTAL TANK CAPACITY (gal)	2500
TOTAL LENGTH	15'-0"
DIAMETER (in.)	72
INLET HEIGHT (in.)	64
OUTLET HEIGHT (in.)	56
BIOMEDIA VOLUME (cu.ft.)	30
AIR DIFFUSER	2-EDI FINE BUBBLE
AIR COMPRESSOR	HIBLOW HP150
RECIRCULATION CONTROL	NEEDLE VALVE
ALARM CONTROL PANEL	MCP-G
TELEMETRY	OPTIONAL

DRAWN:	DATE:	JOB NUMBER:
AJM	2/10/21	ES7.5

REVISION:		
REVISION:	DATE:	DESCRIPTION:
	BY:	

SITE INFORMATION:

ES 7.5
ENVIROSERVER
ADVANCED WASTEWATER
TREATMENT SYSTEM

SHEET TITLE:

ES7.5-GRAV/NV

SHEET NUMBER:

1 OF 1

NOTES:

*MATERIALS NOT SUPPLIED BY MICROSEPTEC

ENVIROSERVER - ES SERIES ES7.5-GRAV/NV/UV

DESCRIPTION:

PRIMARY AND SECONDARY WASTEWATER TREATMENT DEVICE USING BOTH FIXED FILM AND SUSPENDED GROWTH WITH MULTI-STAGE AEROBIC PROCESS. TANK CAPACITIES LISTED ARE FOR STANDARD UNITS



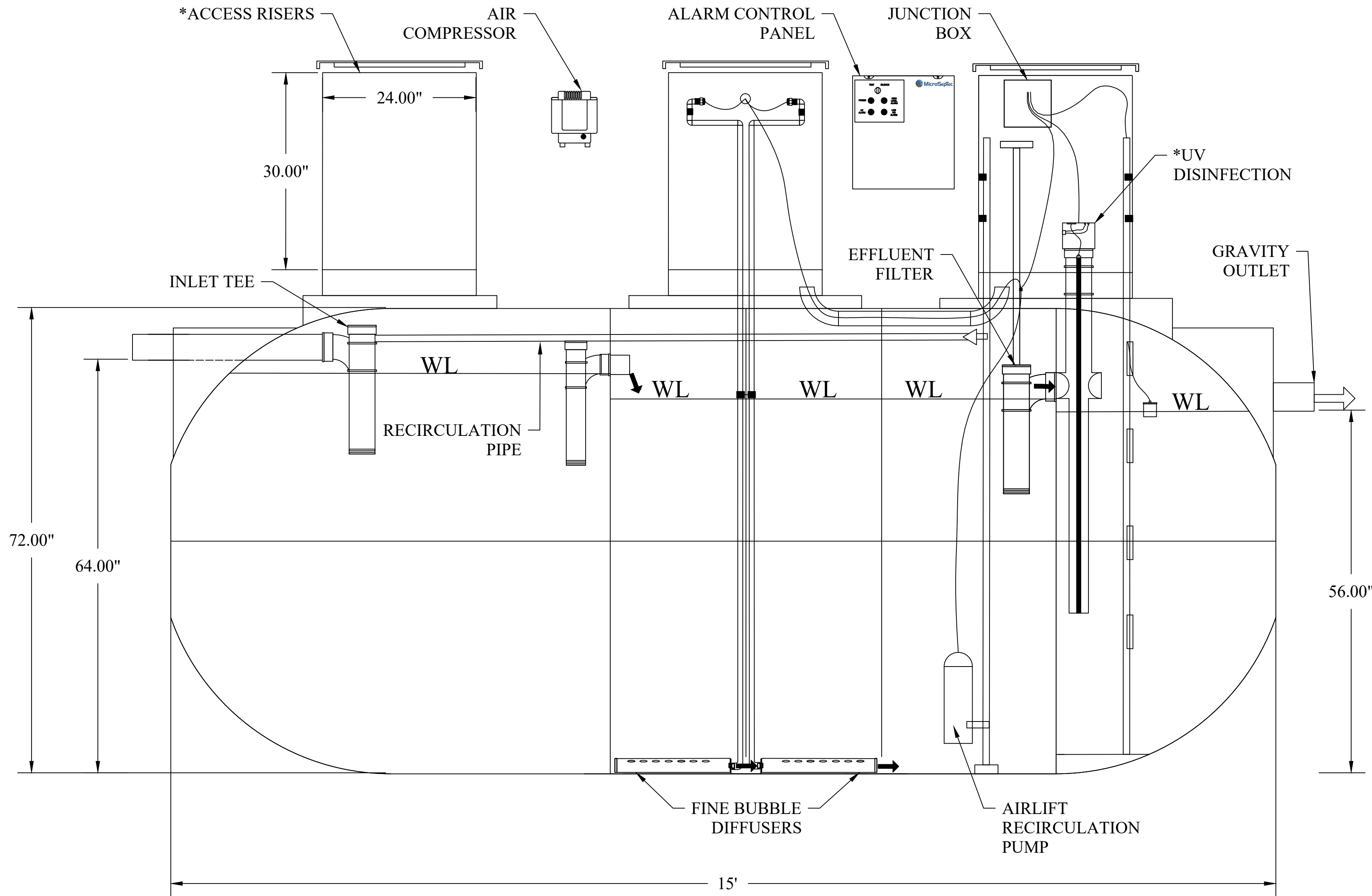
31 AFFONSO DRIVE
MOUND HOUSE, NV 89706
1(877)-4SEPTIC [1(877)473-7842]
WWW.MICROSEPTEC.COM

NOTES

- GENERAL:**
- THE MIDDLE THREE CHAMBERS SHOULD NEVER BE PUMPED DRY, ESPECIALLY IN HIGH GROUNDWATER CONDITIONS
 - RISERS AND RISER ADAPTERS NOT SUPPLIED BY MICROSEPTEC
 - PLUMBING DIMENSIONS FROM OUTSIDE EDGE OF TANK TO INVERT OF INLET AND OUTLET
 - CONTRACTOR TO PROVIDE ADDITIONAL PLUMBING FOR ANY BURIAL DEPTH GREATER THAN 4FT
 - SITE-SPECIFIC CHARACTERISTICS INCLUDING BUT NOT LIMITED TO: BURIAL DEPTH, TRAFFIC OR OTHER EXTERNAL LOADING, SEASONAL GROUNDWATER, AND SOIL CHARACTERISTICS SHOULD BE CONFIRMED WITH A LOCAL DESIGN ENGINEER BEFORE INSTALLATION

- TANK BURIAL:**
- THE DESIGNED TANK BURIAL DEPTH IS 2FT TO 6FT. ANY TANK BURIED BEYOND THAT RANGE MUST BE ANALYZED BY A LOCAL DESIGN ENGINEER
 - COVER TO BE A MINIMUM OF 2FT.
 - ENGINEERED BACKFILL TO BE A MINIMUM OF 12" ALONG SIDES AND BOTTOM OF TANK
 - GEOLOGIST OR GEOTECHNICAL ENGINEER TO DETERMINE IF ANCHORS AND TEXTILE FILTER ARE REQUIRED.
 - DEPTH OF SOIL SLOPE CUT PER LOCAL CODE OR SOIL REPORT
 - VERTICAL CUT FOR FILL HEIGHT CAN BE DONE IF APPROVED BY LOCAL CODE OR SOIL ENGINEER
 - GEOLOGIST OR GEOTECH ENGINEER SHOULD DETERMINE IF CORROSIVE RESISTANT MATERIAL SHOULD BE USED IN ANY STEEL PARTS EXPOSED IN THE SOIL.

DESIGN TREATMENT CAPACITY (gpd)	750
TOTAL TANK CAPACITY (gal)	2500
TOTAL LENGTH	15'-0"
DIAMETER (in.)	72
INLET HEIGHT (in.)	64
OUTLET HEIGHT (in.)	56
BIOMEDIA VOLUME (cu.ft.)	30
AIR DIFFUSER	2-EDI FINE BUBBLE
AIR COMPRESSOR	HIBLOW HP150
RECIRCULATION CONTROL	NEEDLE VALVE
ALARM CONTROL PANEL	MCP-G
TELEMETRY	OPTIONAL
DISINFECTION	SALCOR 3G



NOTES:

*MATERIALS NOT SUPPLIED BY MICROSEPTEC

DRAWN:	DATE:	JOB NUMBER:
AJM	2/10/21	ES7.5

REVISION:		
REVISION:	DATE:	DESCRIPTION:
BY:	BY:	

SITE INFORMATION:

ES 7.5
ENVIROSERVER
ADVANCED WASTEWATER
TREATMENT SYSTEM

SHEET TITLE:

ES7.5-GRAV/NV/UV

SHEET NUMBER:

1 OF 1

ENVIROSERVER - ES SERIES ES7.5-GRAV/MRP

DESCRIPTION:

PRIMARY AND SECONDARY WASTEWATER TREATMENT DEVICE USING BOTH FIXED FILM AND SUSPENDED GROWTH WITH MULTI-STAGE AEROBIC PROCESS. TANK CAPACITIES LISTED ARE FOR STANDARD UNITS



31 AFFONSO DRIVE
MOUND HOUSE, NV 89706
1(877)-4SEPTIC [1(877)473-7842]
WWW.MICROSEPTEC.COM

NOTES

- GENERAL:
1. THE MIDDLE THREE CHAMBERS SHOULD NEVER BE PUMPED DRY, ESPECIALLY IN HIGH GROUNDWATER CONDITIONS
 2. RISERS AND RISER ADAPTERS NOT SUPPLIED BY MICROSEPTEC
 3. PLUMBING DIMENSIONS FROM OUTSIDE EDGE OF TANK TO INVERT OF INLET AND OUTLET
 4. CONTRACTOR TO PROVIDE ADDITIONAL PLUMBING FOR ANY BURIAL DEPTH GREATER THAN 4FT
 5. SITE-SPECIFIC CHARACTERISTICS INCLUDING BUT NOT LIMITED TO: BURIAL DEPTH, TRAFFIC OR OTHER EXTERNAL LOADING, SEASONAL GROUNDWATER, AND SOIL CHARACTERISTICS SHOULD BE CONFIRMED WITH A LOCAL DESIGN ENGINEER BEFORE INSTALLATION

- TANK BURIAL:
6. THE DESIGNED TANK BURIAL DEPTH IS 2FT TO 6FT. ANY TANK BURIED BEYOND THAT RANGE MUST BE ANALYZED BY A LOCAL DESIGN ENGINEER
 7. COVER TO BE A MINIMUM OF 2FT.
 8. ENGINEERED BACKFILL TO BE A MINIMUM OF 12" ALONG SIDES AND BOTTOM OF TANK
 9. GEOLOGIST OR GEOTECHNICAL ENGINEER TO DETERMINE IF ANCHORS AND TEXTILE FILTER ARE REQUIRED.
 10. DEPTH OF SOIL SLOPE CUT PER LOCAL CODE OR SOIL REPORT
 11. VERTICAL CUT FOR FILL HEIGHT CAN BE DONE IF APPROVED BY LOCAL CODE OR SOIL ENGINEER
 12. GEOLOGIST OR GEOTECH ENGINEER SHOULD DETERMINE IF CORROSIVE RESISTANT MATERIAL SHOULD BE USED IN ANY STEEL PARTS EXPOSED IN THE SOIL.

DESIGN TREATMENT CAPACITY (gpd)	750
TOTAL TANK CAPACITY (gal)	2500
TOTAL LENGTH	15'-0"
DIAMETER (in.)	72
INLET HEIGHT (in.)	64
OUTLET HEIGHT (in.)	56
BIOMEDIA VOLUME (cu.ft.)	30
AIR DIFFUSER	2-EDI FINE BUBBLE
AIR COMPRESSOR	HIBLOW HP150
RECIRCULATION CONTROL	MECHANICAL
ALARM CONTROL PANEL	MCPR-G
TELEMETRY	OPTIONAL

DRAWN:	DATE:	JOB NUMBER:
AJM	2/10/21	ES7.5

REVISION:		
REVISION:	DATE:	DESCRIPTION:
	BY:	

SITE INFORMATION:

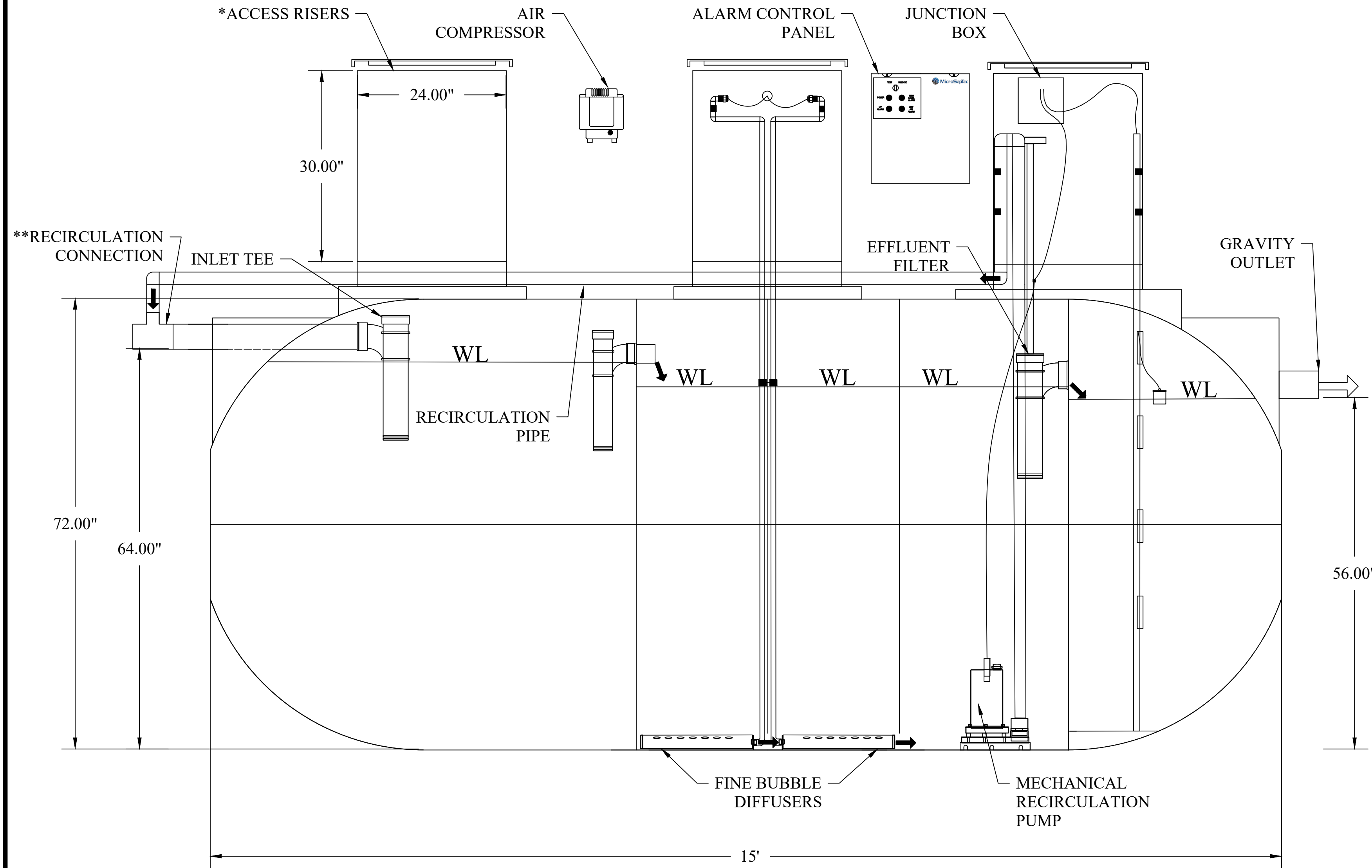
ES 7.5
ENVIROSERVER
ADVANCED WASTEWATER
TREATMENT SYSTEM

SHEET TITLE:

ES7.5-GRAV/MRP

SHEET NUMBER:

1 OF 1



NOTES:

- *MATERIALS NOT SUPPLIED BY MICROSEPTEC
- **RECIRCULATION CONNECTION MUST BE LOCATED AT A MINIMUM OF 3FT FROM THE TANK

ENVIROSERVER - ES SERIES ES7.5-GRAV/MRP/UV



31 AFFONSO DRIVE
MOUND HOUSE, NV 89706
1(877)-4SEPTIC [1(877)473-7842]
WWW.MICROSEPTEC.COM

DESCRIPTION:

PRIMARY AND SECONDARY WASTEWATER TREATMENT DEVICE USING BOTH FIXED FILM AND SUSPENDED GROWTH WITH MULTI-STAGE AEROBIC PROCESS. TANK CAPACITIES LISTED ARE FOR STANDARD UNITS

NOTES

- GENERAL:
- THE MIDDLE THREE CHAMBERS SHOULD NEVER BE PUMPED DRY, ESPECIALLY IN HIGH GROUNDWATER CONDITIONS
 - RISERS AND RISER ADAPTERS NOT SUPPLIED BY MICROSEPTEC
 - PLUMBING DIMENSIONS FROM OUTSIDE EDGE OF TANK TO INVERT OF INLET AND OUTLET
 - CONTRACTOR TO PROVIDE ADDITIONAL PLUMBING FOR ANY BURIAL DEPTH GREATER THAN 4FT
 - SITE-SPECIFIC CHARACTERISTICS INCLUDING BUT NOT LIMITED TO: BURIAL DEPTH, TRAFFIC OR OTHER EXTERNAL LOADING, SEASONAL GROUNDWATER, AND SOIL CHARACTERISTICS SHOULD BE CONFIRMED WITH A LOCAL DESIGN ENGINEER BEFORE INSTALLATION

- TANK BURIAL:
- THE DESIGNED TANK BURIAL DEPTH IS 2FT TO 6FT. ANY TANK BURIED BEYOND THAT RANGE MUST BE ANALYZED BY A LOCAL DESIGN ENGINEER
 - COVER TO BE A MINIMUM OF 2FT
 - ENGINEERED BACKFILL TO BE A MINIMUM OF 12" ALONG SIDES AND BOTTOM OF TANK
 - GEOLOGIST OR GEOTECHNICAL ENGINEER TO DETERMINE IF ANCHORS AND TEXTILE FILTER ARE REQUIRED.
 - DEPTH OF SOIL SLOPE CUT PER LOCAL CODE OR SOIL REPORT
 - VERTICAL CUT FOR FILL HEIGHT CAN BE DONE IF APPROVED BY LOCAL CODE OR SOIL ENGINEER
 - GEOLOGIST OR GEOTECH ENGINEER SHOULD DETERMINE IF CORROSIVE RESISTANT MATERIAL SHOULD BE USED IN ANY STEEL PARTS EXPOSED IN THE SOIL

DESIGN TREATMENT CAPACITY (gpd)	750
TOTAL TANK CAPACITY (gal)	2500
TOTAL LENGTH	15'-0"
DIAMETER (in.)	72
INLET HEIGHT (in.)	64
OUTLET HEIGHT (in.)	56
BIOMEDIA VOLUME (cu.ft.)	30
AIR DIFFUSER	2-EDI FINE BUBBLE
AIR COMPRESSOR	HIBLOW HP150
RECIRCULATION CONTROL	MECHANICAL
ALARM CONTROL PANEL	MCPR-G
TELEMETRY	OPTIONAL
DISINFECTION	SALCOR 3G

DRAWN:	DATE:	JOB NUMBER:
AJM	2/10/21	ES7.5

REVISION:		
REVISION:	DATE:	DESCRIPTION:
BY:	BY:	

SITE INFORMATION:

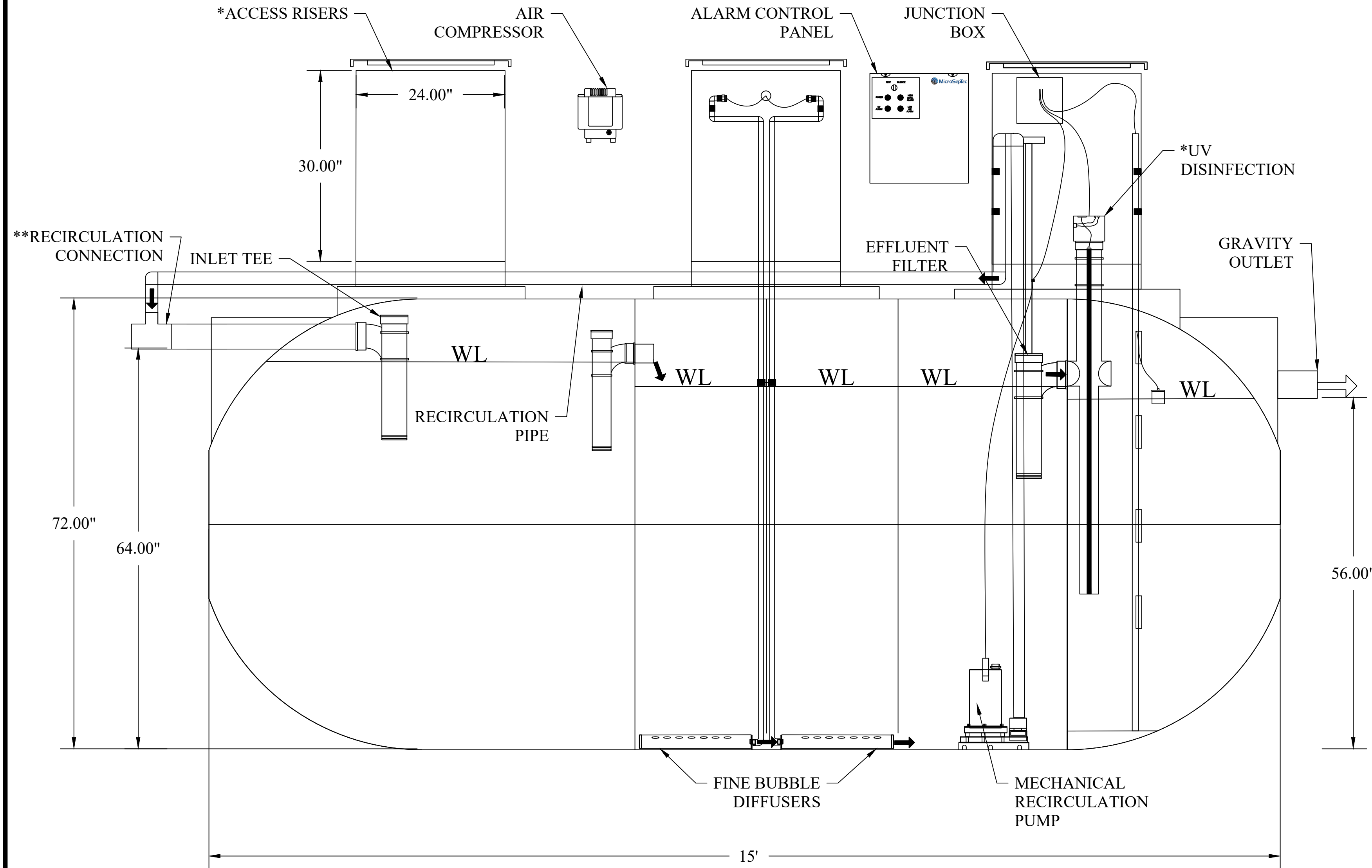
ES 7.5
ENVIROSERVER
ADVANCED WASTEWATER
TREATMENT SYSTEM

SHEET TITLE:

ES7.5-GRAV/MRP/UV

SHEET NUMBER:

1 OF 1



NOTES:

- *MATERIALS NOT SUPPLIED BY MICROSEPTEC
- **RECIRCULATION CONNECTION MUST BE LOCATED AT A MINIMUM OF 3FT FROM THE TANK

ENVIROSERVER - ES SERIES ES7.5-PUMP/MRP

DESCRIPTION:

PRIMARY AND SECONDARY WASTEWATER TREATMENT DEVICE USING BOTH FIXED FILM AND SUSPENDED GROWTH WITH MULTI-STAGE AEROBIC PROCESS. TANK CAPACITIES LISTED ARE FOR STANDARD UNITS



31 AFFONSO DRIVE
MOUND HOUSE, NV 89706
1(877)-4SEPTIC [1(877)473-7842]
WWW.MICROSEPTEC.COM

NOTES

- GENERAL:
1. THE MIDDLE THREE CHAMBERS SHOULD NEVER BE PUMPED DRY, ESPECIALLY IN HIGH GROUNDWATER CONDITIONS
 2. RISERS AND RISER ADAPTERS NOT SUPPLIED BY MICROSEPTEC
 3. PLUMBING DIMENSIONS FROM OUTSIDE EDGE OF TANK TO INVERT OF INLET AND OUTLET
 4. CONTRACTOR TO PROVIDE ADDITIONAL PLUMBING FOR ANY BURIAL DEPTH GREATER THAN 4FT
 5. SITE-SPECIFIC CHARACTERISTICS INCLUDING BUT NOT LIMITED TO: BURIAL DEPTH, TRAFFIC OR OTHER EXTERNAL LOADING, SEASONAL GROUNDWATER, AND SOIL CHARACTERISTICS SHOULD BE CONFIRMED WITH A LOCAL DESIGN ENGINEER BEFORE INSTALLATION

- TANK BURIAL:
6. THE DESIGNED TANK BURIAL DEPTH IS 2FT TO 6FT. ANY TANK BURIED BEYOND THAT RANGE MUST BE ANALYZED BY A LOCAL DESIGN ENGINEER
 7. COVER TO BE A MINIMUM OF 2FT.
 8. ENGINEERED BACKFILL TO BE A MINIMUM OF 12" ALONG SIDES AND BOTTOM OF TANK
 9. GEOLOGIST OR GEOTECHNICAL ENGINEER TO DETERMINE IF ANCHORS AND TEXTILE FILTER ARE REQUIRED.
 10. DEPTH OF SOIL SLOPE CUT PER LOCAL CODE OR SOIL REPORT
 11. VERTICAL CUT FOR FILL HEIGHT CAN BE DONE IF APPROVED BY LOCAL CODE OR SOIL ENGINEER
 12. GEOLOGIST OR GEOTECH ENGINEER SHOULD DETERMINE IF CORROSIVE RESISTANT MATERIAL SHOULD BE USED IN ANY STEEL PARTS EXPOSED IN THE SOIL.

DESIGN TREATMENT CAPACITY (gpd)	750
TOTAL TANK CAPACITY (gal)	2500
TOTAL LENGTH	15'-0"
DIAMETER (in.)	72
INLET HEIGHT (in.)	64
OUTLET HEIGHT (in.)	56
BIOMEDIA VOLUME (cu.ft.)	30
AIR DIFFUSER	2-EDI FINE BUBBLE
AIR COMPRESSOR	HIBLOW HP150
RECIRCULATION CONTROL	MECHANICAL
ALARM CONTROL PANEL	MCPR-DP
TELEMETRY	OPTIONAL
DISCHARGE PUMP	SIMPLEX OR DUPLEX

DRAWN:	DATE:	JOB NUMBER:
AJM	2/10/21	ES7.5

REVISION:		
REVISION:	DATE:	DESCRIPTION:
	BY:	

SITE INFORMATION:

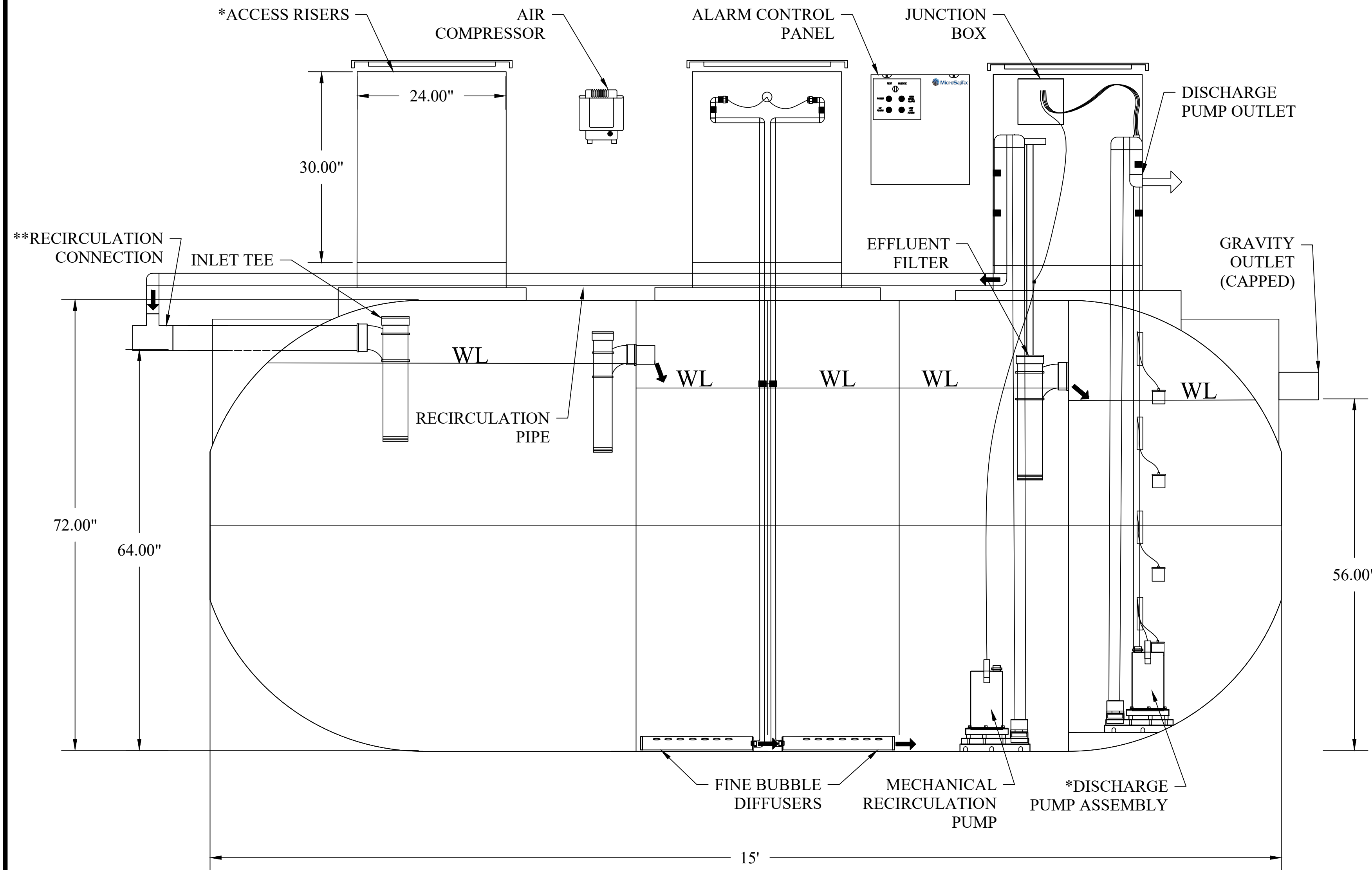
ES 7.5
ENVIROSERVER
ADVANCED WASTEWATER
TREATMENT SYSTEM

SHEET TITLE:

ES7.5-PUMP/MRP

SHEET NUMBER:

1 OF 1



NOTES:

- *MATERIALS NOT SUPPLIED BY MICROSEPTEC
- **RECIRCULATION CONNECTION MUST BE LOCATED AT A MINIMUM OF 3FT FROM THE TANK

ENVIROSERVER - ES SERIES ES7.5-PUMP/MRP/UV



31 AFFONSO DRIVE
MOUND HOUSE, NV 89706
1(877)-4SEPTIC [1(877)473-7842]
WWW.MICROSEPTEC.COM

DESCRIPTION:

PRIMARY AND SECONDARY WASTEWATER TREATMENT DEVICE USING BOTH FIXED FILM AND SUSPENDED GROWTH WITH MULTI-STAGE AEROBIC PROCESS. TANK CAPACITIES LISTED ARE FOR STANDARD UNITS

NOTES

- GENERAL:
1. THE MIDDLE THREE CHAMBERS SHOULD NEVER BE PUMPED DRY, ESPECIALLY IN HIGH GROUNDWATER CONDITIONS
 2. RISERS AND RISER ADAPTERS NOT SUPPLIED BY MICROSEPTEC
 3. PLUMBING DIMENSIONS FROM OUTSIDE EDGE OF TANK TO INVERT OF INLET AND OUTLET
 4. CONTRACTOR TO PROVIDE ADDITIONAL PLUMBING FOR ANY BURIAL DEPTH GREATER THAN 4FT
 5. SITE-SPECIFIC CHARACTERISTICS INCLUDING BUT NOT LIMITED TO: BURIAL DEPTH, TRAFFIC OR OTHER EXTERNAL LOADING, SEASONAL GROUNDWATER, AND SOIL CHARACTERISTICS SHOULD BE CONFIRMED WITH A LOCAL DESIGN ENGINEER BEFORE INSTALLATION

- TANK BURIAL:
6. THE DESIGNED TANK BURIAL DEPTH IS 2FT TO 6FT. ANY TANK BURIED BEYOND THAT RANGE MUST BE ANALYZED BY A LOCAL DESIGN ENGINEER
 7. COVER TO BE A MINIMUM OF 2FT.
 8. ENGINEERED BACKFILL TO BE A MINIMUM OF 12" ALONG SIDES AND BOTTOM OF TANK
 9. GEOLOGIST OR GEOTECHNICAL ENGINEER TO DETERMINE IF ANCHORS AND TEXTILE FILTER ARE REQUIRED.
 10. DEPTH OF SOIL SLOPE CUT PER LOCAL CODE OR SOIL REPORT
 11. VERTICAL CUT FOR FILL HEIGHT CAN BE DONE IF APPROVED BY LOCAL CODE OR SOIL ENGINEER
 12. GEOLOGIST OR GEOTECH ENGINEER SHOULD DETERMINE IF CORROSIVE RESISTANT MATERIAL SHOULD BE USED IN ANY STEEL PARTS EXPOSED IN THE SOIL

DESIGN TREATMENT CAPACITY (gpd)	750
TOTAL TANK CAPACITY (gal)	2500
TOTAL LENGTH	15'-0"
DIAMETER (in.)	72
INLET HEIGHT (in.)	64
OUTLET HEIGHT (in.)	56
BIOMEDIA VOLUME (cu.ft.)	30
AIR DIFFUSER	2-EDI FINE BUBBLE
AIR COMPRESSOR	HIBLOW HP150
RECIRCULATION CONTROL	MECHANICAL
ALARM CONTROL PANEL	MCPR-DP
TELEMETRY	OPTIONAL
DISCHARGE PUMP	SIMPLEX OR DUPLEX
DISINFECTION	SALCOR 3G

DRAWN:	DATE:	JOB NUMBER:
AJM	2/10/21	ES7.5

REVISION:		
REVISION:	DATE:	DESCRIPTION:
BY:		

SITE INFORMATION:

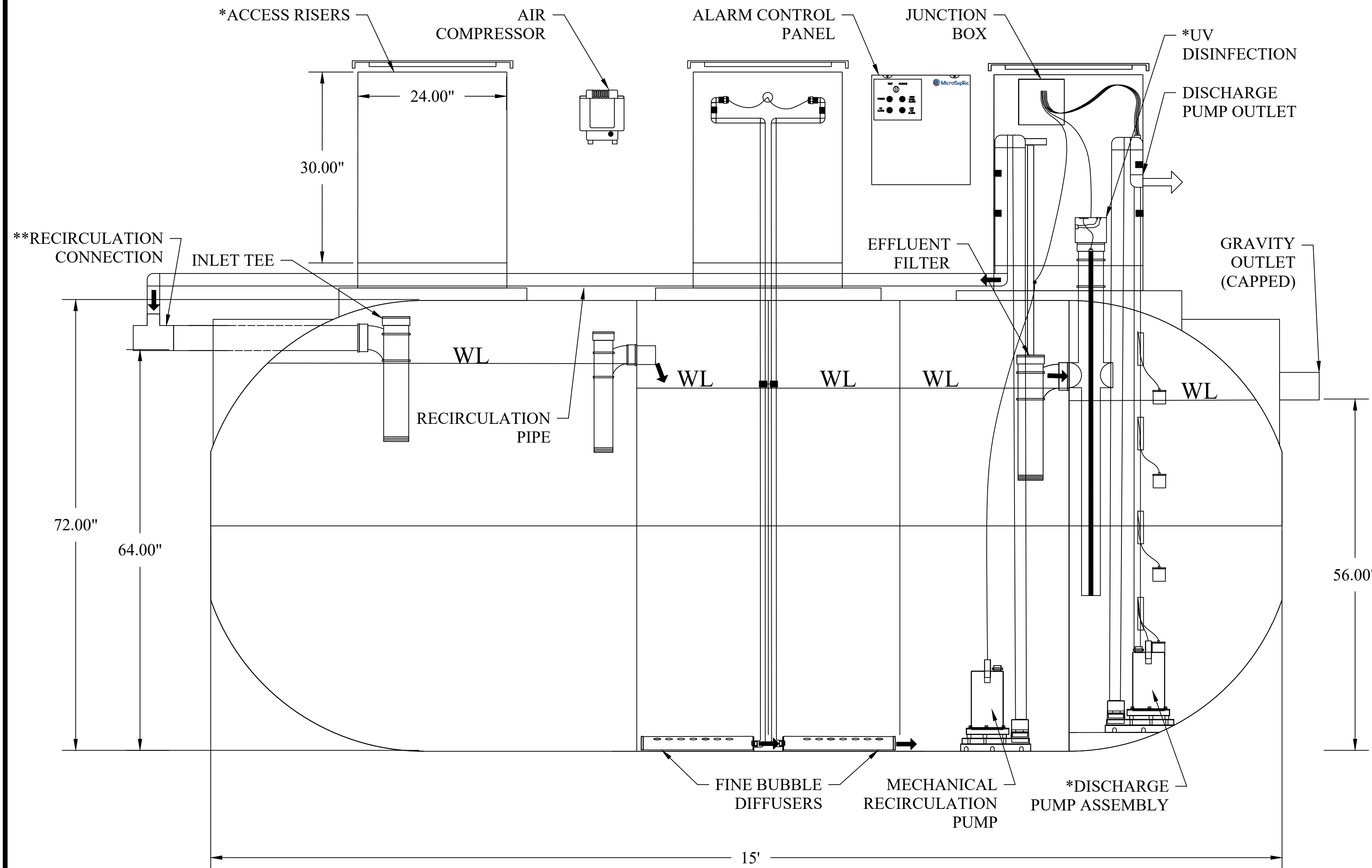
ES 7.5
ENVIROSERVER
ADVANCED WASTEWATER
TREATMENT SYSTEM

SHEET TITLE:

ES7.5-PUMP/MRP/UV

SHEET NUMBER:

1 OF 1



NOTES:

- *MATERIALS NOT SUPPLIED BY MICROSEPTEC
- **RECIRCULATION CONNECTION MUST BE LOCATED AT A MINIMUM OF 3FT FROM THE TANK

ENVIROSERVER - ES SERIES ES7.5-PUMP/SOL



31 AFFONSO DRIVE
MOUND HOUSE, NV 89706
1(877)-4SEPTIC [1(877)473-7842]
WWW.MICROSEPTEC.COM

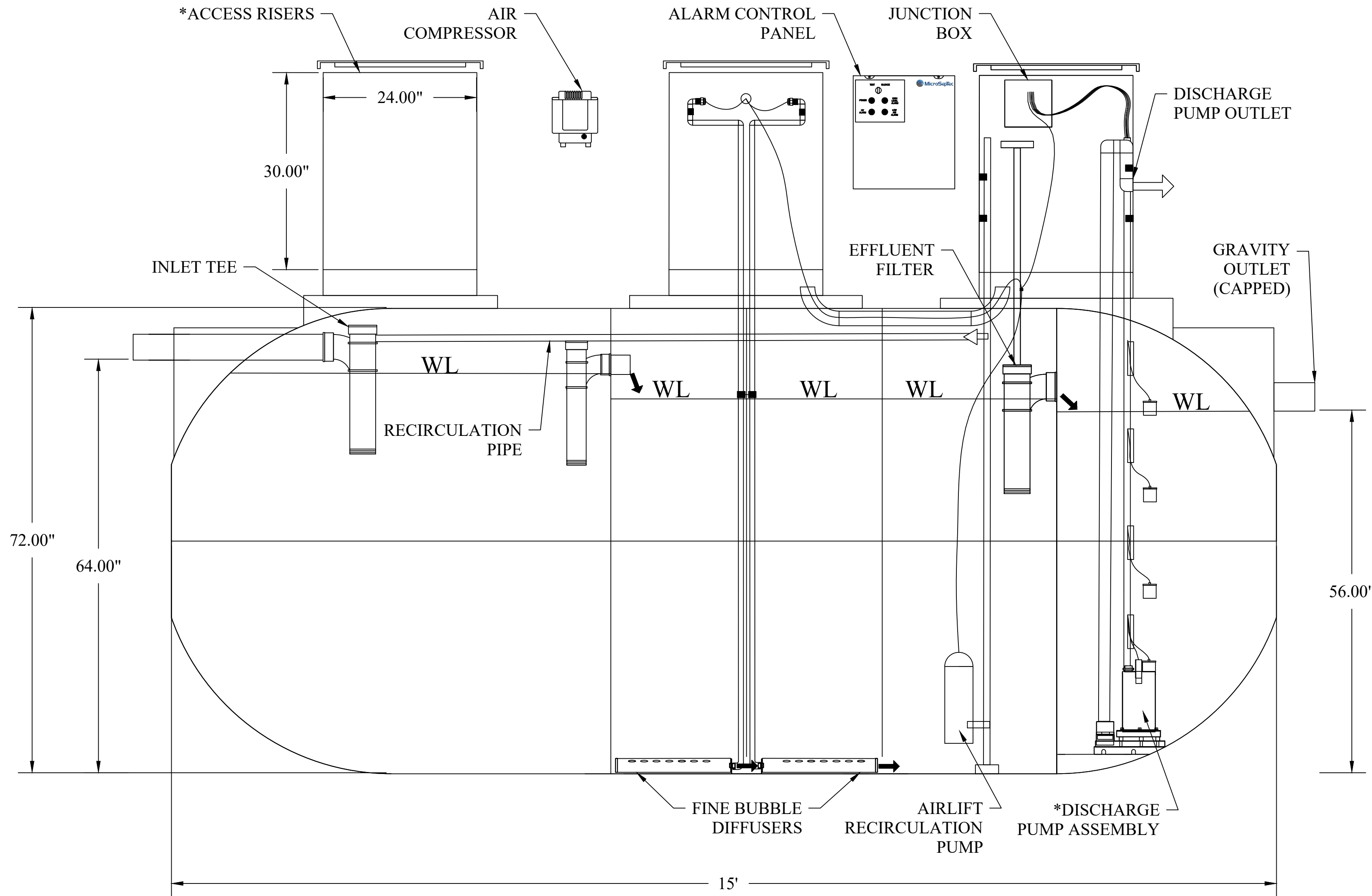
DESCRIPTION:

PRIMARY AND SECONDARY WASTEWATER TREATMENT DEVICE USING BOTH FIXED FILM AND SUSPENDED GROWTH WITH MULTI-STAGE AEROBIC PROCESS. TANK CAPACITIES LISTED ARE FOR STANDARD UNITS

NOTES

- GENERAL:
1. THE MIDDLE THREE CHAMBERS SHOULD NEVER BE PUMPED DRY, ESPECIALLY IN HIGH GROUNDWATER CONDITIONS
 2. RISERS AND RISER ADAPTERS NOT SUPPLIED BY MICROSEPTEC
 3. PLUMBING DIMENSIONS FROM OUTSIDE EDGE OF TANK TO INVERT OF INLET AND OUTLET
 4. CONTRACTOR TO PROVIDE ADDITIONAL PLUMBING FOR ANY BURIAL DEPTH GREATER THAN 4FT
 5. SITE-SPECIFIC CHARACTERISTICS INCLUDING BUT NOT LIMITED TO: BURIAL DEPTH, TRAFFIC OR OTHER EXTERNAL LOADING, SEASONAL GROUNDWATER, AND SOIL CHARACTERISTICS SHOULD BE CONFIRMED WITH A LOCAL DESIGN ENGINEER BEFORE INSTALLATION

- TANK BURIAL:
6. THE DESIGNED TANK BURIAL DEPTH IS 2FT TO 6FT. ANY TANK BURIED BEYOND THAT RANGE MUST BE ANALYZED BY A LOCAL DESIGN ENGINEER
 7. COVER TO BE A MINIMUM OF 2FT.
 8. ENGINEERED BACKFILL TO BE A MINIMUM OF 12" ALONG SIDES AND BOTTOM OF TANK
 9. GEOLOGIST OR GEOTECHNICAL ENGINEER TO DETERMINE IF ANCHORS AND TEXTILE FILTER ARE REQUIRED.
 10. DEPTH OF SOIL SLOPE CUT PER LOCAL CODE OR SOIL REPORT
 11. VERTICAL CUT FOR FILL HEIGHT CAN BE DONE IF APPROVED BY LOCAL CODE OR SOIL ENGINEER
 12. GEOLOGIST OR GEOTECH ENGINEER SHOULD DETERMINE IF CORROSIVE RESISTANT MATERIAL SHOULD BE USED IN ANY STEEL PARTS EXPOSED IN THE SOIL



DESIGN TREATMENT CAPACITY (gpd)	750
TOTAL TANK CAPACITY (gal)	2500
TOTAL LENGTH	15'-0"
DIAMETER (in.)	72
INLET HEIGHT (in.)	64
OUTLET HEIGHT (in.)	56
BIOMEDIA VOLUME (cu.ft.)	30
AIR DIFFUSER	2-EDI FINE BUBBLE
AIR COMPRESSOR	HIBLOW HP150
RECIRCULATION CONTROL	SOLENOID
ALARM CONTROL PANEL	MCPR-DP
TELEMETRY	OPTIONAL
DISCHARGE PUMP	SIMPLEX OR DUPLEX

DRAWN:	DATE:	JOB NUMBER:
AJM	2/10/21	ES7.5

REVISION:		
REVISION:	DATE:	DESCRIPTION:
	BY:	

SITE INFORMATION:

ES 7.5
ENVIROSERVER
ADVANCED WASTEWATER
TREATMENT SYSTEM

SHEET TITLE:

ES7.5-PUMP/SOL

SHEET NUMBER:

1 OF 1

NOTES:

*MATERIALS NOT SUPPLIED BY MICROSEPTEC

ENVIROSERVER - ES SERIES ES7.5-PUMP/SOL/UV



31 AFFONSO DRIVE
MOUND HOUSE, NV 89706
1(877)-4SEPTIC [1(877)473-7842]
WWW.MICROSEPTEC.COM

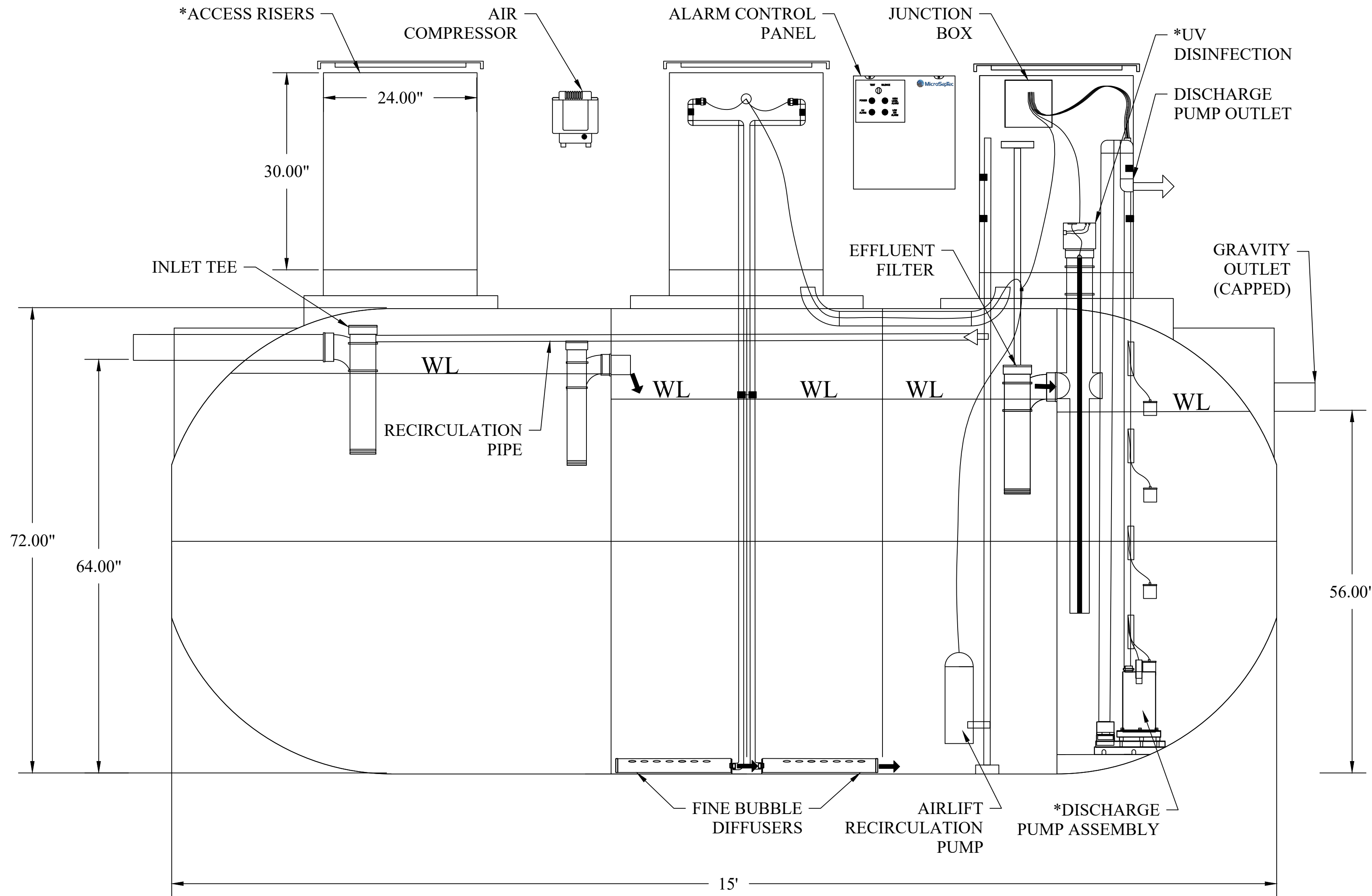
DESCRIPTION:

PRIMARY AND SECONDARY WASTEWATER TREATMENT DEVICE USING BOTH FIXED FILM AND SUSPENDED GROWTH WITH MULTI-STAGE AEROBIC PROCESS. TANK CAPACITIES LISTED ARE FOR STANDARD UNITS

NOTES

- GENERAL:
- THE MIDDLE THREE CHAMBERS SHOULD NEVER BE PUMPED DRY, ESPECIALLY IN HIGH GROUNDWATER CONDITIONS
 - RISERS AND RISER ADAPTERS NOT SUPPLIED BY MICROSEPTEC
 - PLUMBING DIMENSIONS FROM OUTSIDE EDGE OF TANK TO INVERT OF INLET AND OUTLET
 - CONTRACTOR TO PROVIDE ADDITIONAL PLUMBING FOR ANY BURIAL DEPTH GREATER THAN 4FT
 - SITE-SPECIFIC CHARACTERISTICS INCLUDING BUT NOT LIMITED TO: BURIAL DEPTH, TRAFFIC OR OTHER EXTERNAL LOADING, SEASONAL GROUNDWATER, AND SOIL CHARACTERISTICS SHOULD BE CONFIRMED WITH A LOCAL DESIGN ENGINEER BEFORE INSTALLATION

- TANK BURIAL:
- THE DESIGNED TANK BURIAL DEPTH IS 2FT TO 6FT. ANY TANK BURIED BEYOND THAT RANGE MUST BE ANALYZED BY A LOCAL DESIGN ENGINEER
 - COVER TO BE A MINIMUM OF 2FT.
 - ENGINEERED BACKFILL TO BE A MINIMUM OF 12" ALONG SIDES AND BOTTOM OF TANK
 - GEOLOGIST OR GEOTECHNICAL ENGINEER TO DETERMINE IF ANCHORS AND TEXTILE FILTER ARE REQUIRED.
 - DEPTH OF SOIL SLOPE CUT PER LOCAL CODE OR SOIL REPORT
 - VERTICAL CUT FOR FILL HEIGHT CAN BE DONE IF APPROVED BY LOCAL CODE OR SOIL ENGINEER
 - GEOLOGIST OR GEOTECH ENGINEER SHOULD DETERMINE IF CORROSIVE RESISTANT MATERIAL SHOULD BE USED IN ANY STEEL PARTS EXPOSED IN THE SOIL



DESIGN TREATMENT CAPACITY (gpd)	750
TOTAL TANK CAPACITY (gal)	2500
TOTAL LENGTH	15'-0"
DIAMETER (in.)	72
INLET HEIGHT (in.)	64
OUTLET HEIGHT (in.)	56
BIOMEDIA VOLUME (cu.ft.)	30
AIR DIFFUSER	2-EDI FINE BUBBLE
AIR COMPRESSOR	HIBLOW HP150
RECIRCULATION CONTROL	SOLENOID
ALARM CONTROL PANEL	MCPR-DP
TELEMETRY	OPTIONAL
DISCHARGE PUMP	SIMPLEX OR DUPLEX
DISINFECTION	SALCOR 3G

DRAWN:	DATE:	JOB NUMBER:
AJM	2/10/21	ES7.5

REVISION:		
REVISION:	DATE:	DESCRIPTION:
BY:		

SITE INFORMATION:

ES 7.5
ENVIROSERVER
ADVANCED WASTEWATER
TREATMENT SYSTEM

SHEET TITLE:

ES7.5-PUMP/SOL/UV

SHEET NUMBER:

1 OF 1

NOTES:

*MATERIALS NOT SUPPLIED BY MICROSEPTEC

ENVIROSERVER - ES SERIES ES7.5-PUMP/NV



31 AFFONSO DRIVE
MOUND HOUSE, NV 89706
1(877)-4SEPTIC [1(877)473-7842]
WWW.MICROSEPTEC.COM

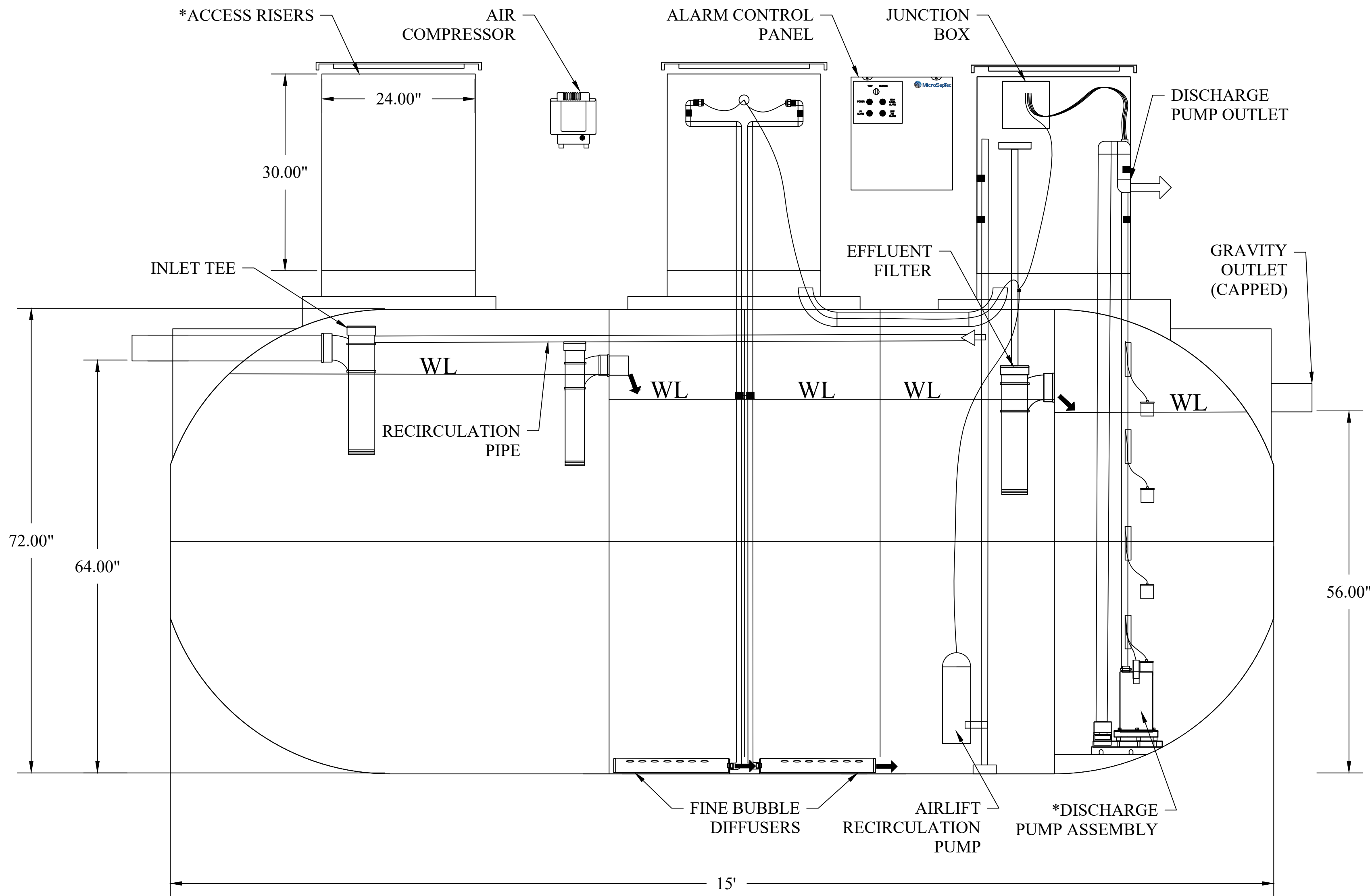
DESCRIPTION:

PRIMARY AND SECONDARY WASTEWATER TREATMENT DEVICE USING BOTH FIXED FILM AND SUSPENDED GROWTH WITH MULTI-STAGE AEROBIC PROCESS. TANK CAPACITIES LISTED ARE FOR STANDARD UNITS

NOTES

- GENERAL:
1. THE MIDDLE THREE CHAMBERS SHOULD NEVER BE PUMPED DRY, ESPECIALLY IN HIGH GROUNDWATER CONDITIONS
 2. RISERS AND RISER ADAPTERS NOT SUPPLIED BY MICROSEPTEC
 3. PLUMBING DIMENSIONS FROM OUTSIDE EDGE OF TANK TO INVERT OF INLET AND OUTLET
 4. CONTRACTOR TO PROVIDE ADDITIONAL PLUMBING FOR ANY BURIAL DEPTH GREATER THAN 4FT
 5. SITE-SPECIFIC CHARACTERISTICS INCLUDING BUT NOT LIMITED TO: BURIAL DEPTH, TRAFFIC OR OTHER EXTERNAL LOADING, SEASONAL GROUNDWATER, AND SOIL CHARACTERISTICS SHOULD BE CONFIRMED WITH A LOCAL DESIGN ENGINEER BEFORE INSTALLATION

- TANK BURIAL:
6. THE DESIGNED TANK BURIAL DEPTH IS 2FT TO 6FT. ANY TANK BURIED BEYOND THAT RANGE MUST BE ANALYZED BY A LOCAL DESIGN ENGINEER
 7. COVER TO BE A MINIMUM OF 2FT.
 8. ENGINEERED BACKFILL TO BE A MINIMUM OF 12" ALONG SIDES AND BOTTOM OF TANK
 9. GEOLOGIST OR GEOTECHNICAL ENGINEER TO DETERMINE IF ANCHORS AND TEXTILE FILTER ARE REQUIRED.
 10. DEPTH OF SOIL SLOPE CUT PER LOCAL CODE OR SOIL REPORT
 11. VERTICAL CUT FOR FILL HEIGHT CAN BE DONE IF APPROVED BY LOCAL CODE OR SOIL ENGINEER
 12. GEOLOGIST OR GEOTECH ENGINEER SHOULD DETERMINE IF CORROSIVE RESISTANT MATERIAL SHOULD BE USED IN ANY STEEL PARTS EXPOSED IN THE SOIL



DESIGN TREATMENT CAPACITY (gpd)	750
TOTAL TANK CAPACITY (gal)	2500
TOTAL LENGTH	15'-0"
DIAMETER (in.)	72
INLET HEIGHT (in.)	64
OUTLET HEIGHT (in.)	56
BIOMEDIA VOLUME (cu.ft.)	30
AIR DIFFUSER	2-EDI FINE BUBBLE
AIR COMPRESSOR	HIBLOW HP150
RECIRCULATION CONTROL	NEEDLE VALVE
ALARM CONTROL PANEL	MCPR-DP
TELEMETRY	OPTIONAL
DISCHARGE PUMP	SIMPLEX OR DUPLEX

DRAWN:	DATE:	JOB NUMBER:
AJM	2/10/21	ES7.5

REVISION:		
REVISION:	DATE:	DESCRIPTION:
	BY:	

SITE INFORMATION:

ES 7.5
ENVIROSERVER
ADVANCED WASTEWATER
TREATMENT SYSTEM

SHEET TITLE:

ES7.5-PUMP/NV

SHEET NUMBER:

1 OF 1

NOTES:

*MATERIALS NOT SUPPLIED BY MICROSEPTEC

ENVIROSERVER - ES SERIES ES7.5-PUMP/NV/UV



31 AFFONSO DRIVE
MOUND HOUSE, NV 89706
1(877)-4SEPTIC [1(877)473-7842]
WWW.MICROSEPTEC.COM

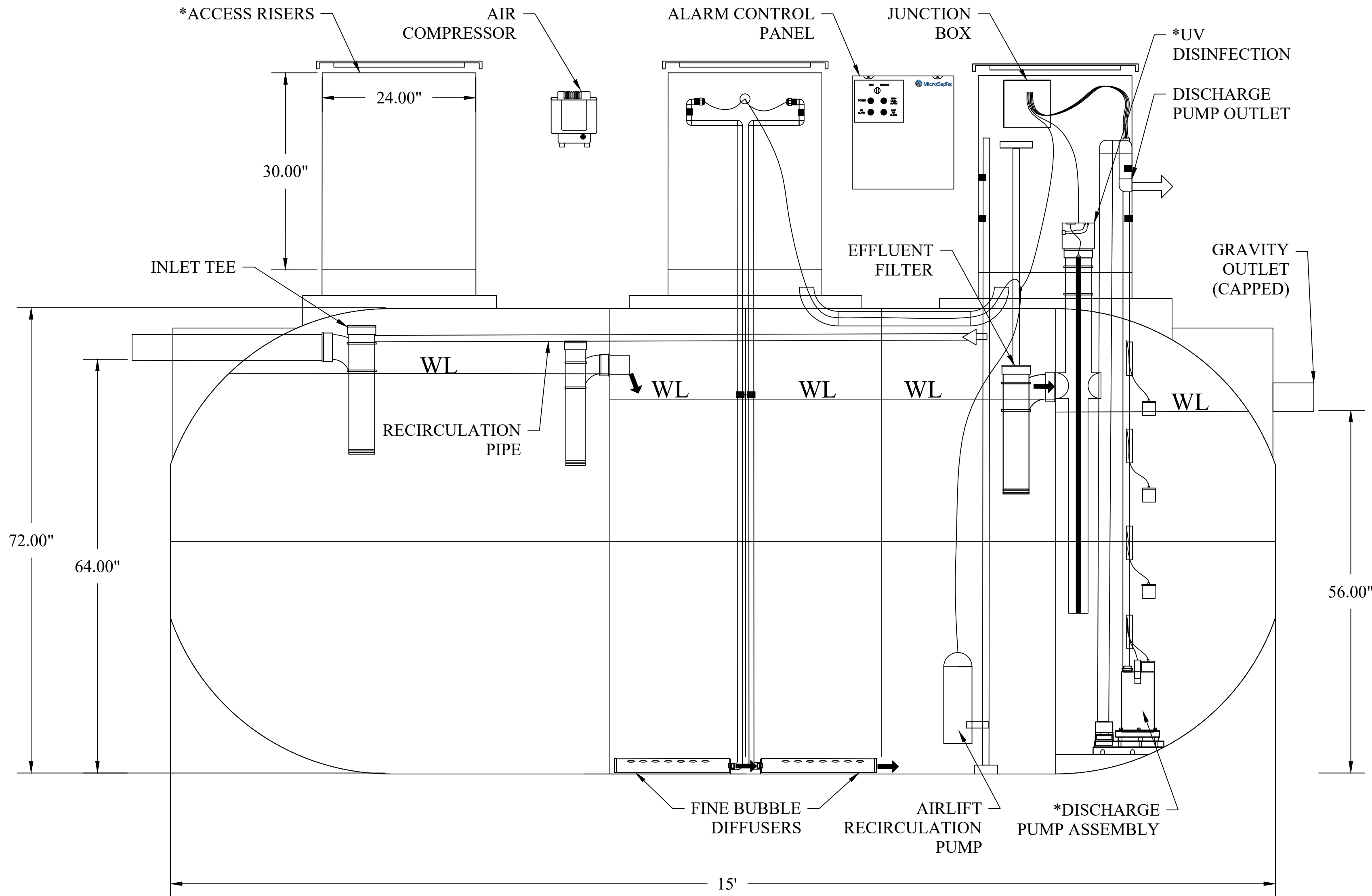
DESCRIPTION:

PRIMARY AND SECONDARY WASTEWATER TREATMENT DEVICE USING BOTH FIXED FILM AND SUSPENDED GROWTH WITH MULTI-STAGE AEROBIC PROCESS. TANK CAPACITIES LISTED ARE FOR STANDARD UNITS

NOTES

- GENERAL:**
1. THE MIDDLE THREE CHAMBERS SHOULD NEVER BE PUMPED DRY, ESPECIALLY IN HIGH GROUNDWATER CONDITIONS
 2. RISERS AND RISER ADAPTERS NOT SUPPLIED BY MICROSEPTEC
 3. PLUMBING DIMENSIONS FROM OUTSIDE EDGE OF TANK TO INVERT OF INLET AND OUTLET
 4. CONTRACTOR TO PROVIDE ADDITIONAL PLUMBING FOR ANY BURIAL DEPTH GREATER THAN 4FT
 5. SITE-SPECIFIC CHARACTERISTICS INCLUDING BUT NOT LIMITED TO: BURIAL DEPTH, TRAFFIC OR OTHER EXTERNAL LOADING, SEASONAL GROUNDWATER, AND SOIL CHARACTERISTICS SHOULD BE CONFIRMED WITH A LOCAL DESIGN ENGINEER BEFORE INSTALLATION

- TANK BURIAL:**
6. THE DESIGNED TANK BURIAL DEPTH IS 2FT TO 6FT. ANY TANK BURIED BEYOND THAT RANGE MUST BE ANALYZED BY A LOCAL DESIGN ENGINEER
 7. COVER TO BE A MINIMUM OF 2FT.
 8. ENGINEERED BACKFILL TO BE A MINIMUM OF 12" ALONG SIDES AND BOTTOM OF TANK
 9. GEOLOGIST OR GEOTECHNICAL ENGINEER TO DETERMINE IF ANCHORS AND TEXTILE FILTER ARE REQUIRED.
 10. DEPTH OF SOIL SLOPE CUT PER LOCAL CODE OR SOIL REPORT
 11. VERTICAL CUT FOR FILL HEIGHT CAN BE DONE IF APPROVED BY LOCAL CODE OR SOIL ENGINEER
 12. GEOLOGIST OR GEOTECH ENGINEER SHOULD DETERMINE IF CORROSIVE RESISTANT MATERIAL SHOULD BE USED IN ANY STEEL PARTS EXPOSED IN THE SOIL.



DESIGN TREATMENT CAPACITY (gpd)	750
TOTAL TANK CAPACITY (gal)	2500
TOTAL LENGTH	15'-0"
DIAMETER (in.)	72
INLET HEIGHT (in.)	64
OUTLET HEIGHT (in.)	56
BIOMEDIA VOLUME (cu.ft.)	30
AIR DIFFUSER	2-EDI FINE BUBBLE
AIR COMPRESSOR	HIBLOW HP150
RECIRCULATION CONTROL	NEEDLE VALVE
ALARM CONTROL PANEL	MCPR-DP
TELEMETRY	OPTIONAL
DISCHARGE PUMP	SIMPLEX OR DUPLEX
DISINFECTION	SALCOR 3G

DRAWN:	DATE:	JOB NUMBER:
AJM	2/10/21	ES7.5

REVISION:		
REVISION:	DATE:	DESCRIPTION:

SITE INFORMATION:

ES 7.5
ENVIROSERVER
ADVANCED WASTEWATER
TREATMENT SYSTEM

SHEET TITLE:

ES7.5-PUMP/NV/UV

SHEET NUMBER:

1 OF 1

NOTES:

*MATERIALS NOT SUPPLIED BY MICROSEPTEC