

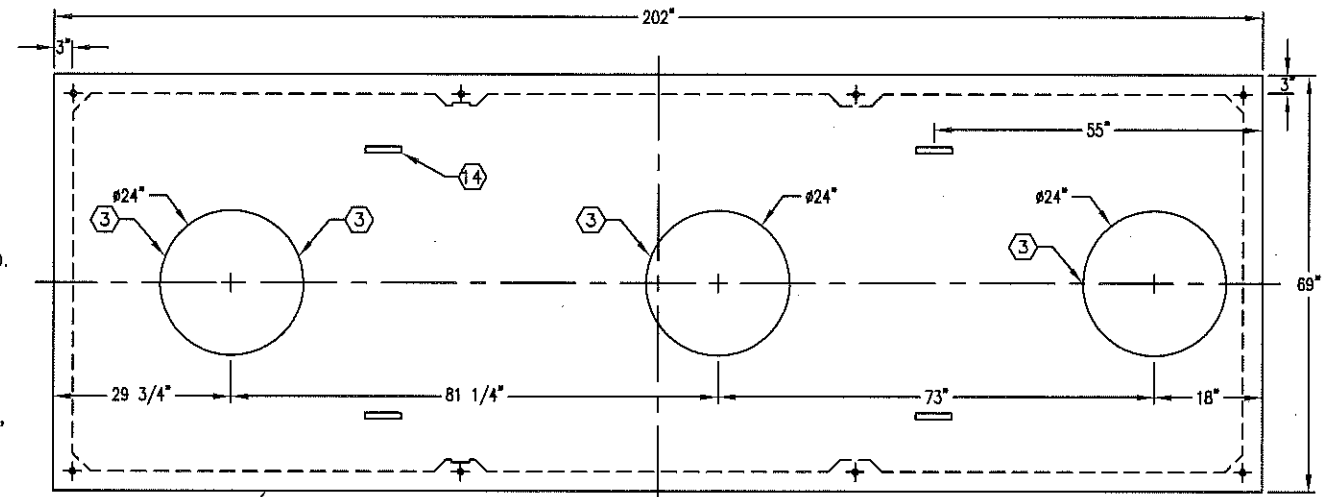
# JZ-2500 GALLON TREATMENT TANK

## NOTES:

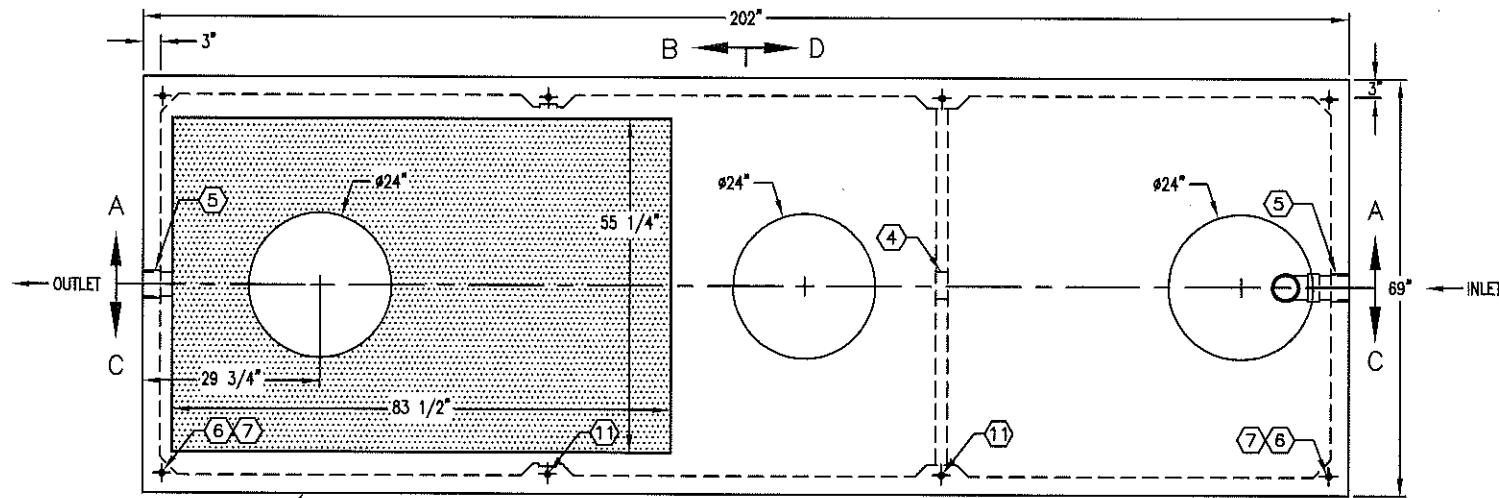
- DESIGNED IN ACCORDANCE WITH AASHTO H-20 TRAFFIC BRIDGE LOADING USING 5,500 PSI COMPRESSIVE STRENGTH CONCRETE AND 60,000 PSI YIELD STRENGTH GRADE 60 A-706 REINFORCEMENT AND PER CALC. #32244.
- INTERCEPT TO BE PLACED ON A 6" BASE OF CRUSHER RUN AND ADEQUATE FOUNDATION FOR EVEN LOAD DISTRIBUTION AND EASE OF INSTALLATION.
- 1'-0" MIN TO 6'-0" MAXIMUM EARTH COVER.
- LIQUID CAPACITY DOES NOT INCLUDE 9" OF AIR SPACE ABOVE FLOWLINES.
- COVER SLAB TO BE INSTALLED WITH CONSEAL PRIOR TO DELIVERY.
- PRODUCT TO BE MARKED "JENSEN PRECAST", "UPC", AND "2500 GA.", IMBED AS SHOWN ON INLET END WALL.

## MATERIALS:

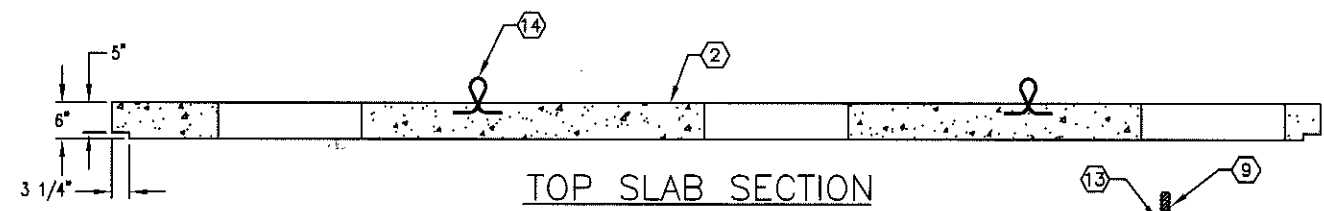
1. TKJZ2500-S15-AM, 2500 GALLON BODY SECTION (CG-JT2500-B) WT. 16,500 lbs.
2. CSJZ2530-S15-AM, 2500 GALLON COVER SLAB 7" THICK (CG-CSJZ2530-4H (531) WT. 6,575 lbs.
3. 24" DIA. OPENING (3) REQ'D.
4. 6" PVC COUPLING SDR 35 (35-25-77). LOCATE AS FOLLOWS: BOTTOM SECTION, BAFFLE WALL CORE MTD.
5. 4"-6" CLOSED BOOT 3005CE (55-30-64). LOCATE AS FOLLOWS: BOTTOM SECTION, (2) CORE MTD.
6. 5/8" DIA. FERRULE LOOP INSERT. LOCATE AS FOLLOWS: BOTTOM SECTION (4) PALLET MTD.
7. 5/8" x 7 1/2" BOLT WITH WASHER (4) REQ'D.
8. 5/8" DIA. x 2 3/8" FERRULE WING INSERT. LOCATE AS FOLLOWS: BOTTOM SECTION (4) SHELL MTD.
9. 3/4" DIA. x 9" LONG ROD (55-20-509). (4) REQ'D.
10. 3/4" DIA. COUPLING (55-20-550). LOCATE AS FOLLOWS: BOTTOM SECTION (4) PALLET MTD.
11. 3/4" DIA. x 48" LONG ALL THREAD HIGH STRENGTH ROD (55-20-548). LOCATE AS FOLLOWS: BOTTOM SECTION (4) PALLET MTD.
12. 3/4" DIA. HEX NUT. (4) REQ'D.
13. 3/4" DIA. HIGH STRENGTH HEX NUT W/WASHER (55-20-552). (4) REQ'D.
14. 5/16" DIA. GALVANIZED AIRCRAFT WIRE (55-15-516) FOR LIFTING. LOCATE AS FOLLOWS: TOP SLAB, (4) SURFACE MTD.



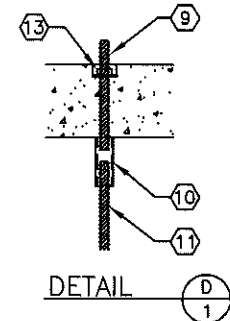
PLAN VIEW-(TOP SLAB ONLY)



PLAN VIEW



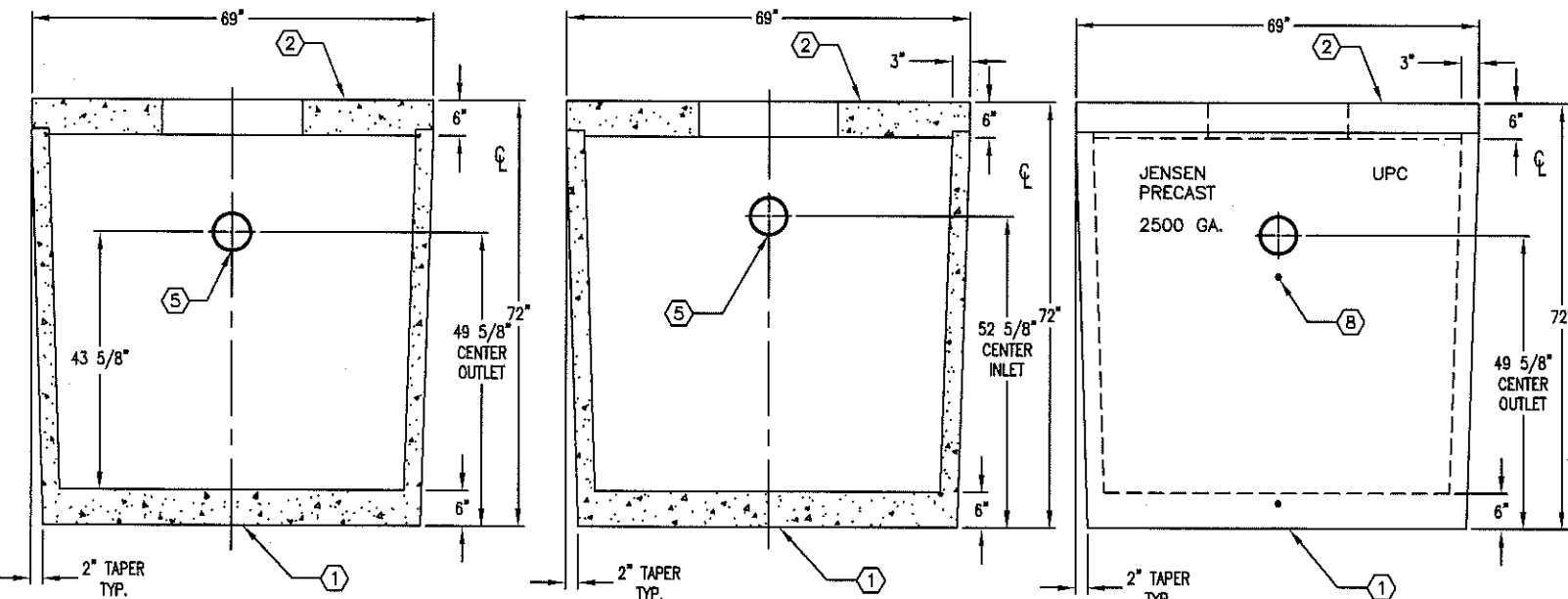
TOP SLAB SECTION



DETAIL D-1

NO SIGNATURE IS REQUIRED

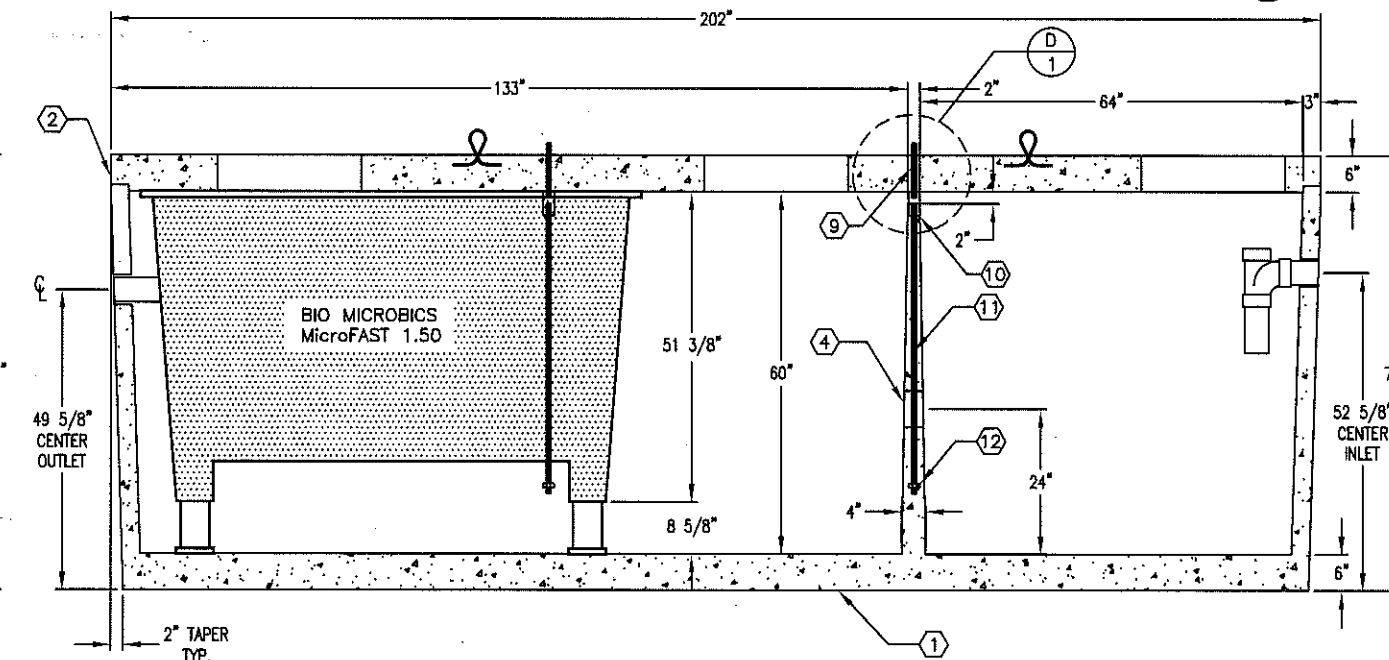
Signature/Stamp area with illegible text.



SECTION B-B

SECTION D-D  
(BAFFLE NOT SHOWN FOR CLARITY)

ELEVATION B-B



SECTION A-A  
(SECTION C-C MIRRORED)



AutoCAD Rel. 14

GTS  
FONTANA, CA.  
S.O.# S15-AM  
(1) UNIT REQ'D.

#	DATE	DESCRIPTION	BY
A	06-22-15	REV'D. KJZ2500G-4H-165364	JS
B	08-31-15	REVISE OPENINGS & COVER SLAB TO 6" PER CALC.	JP

KJZ2500-FAST-1.50-S15-AM  
09-15-11