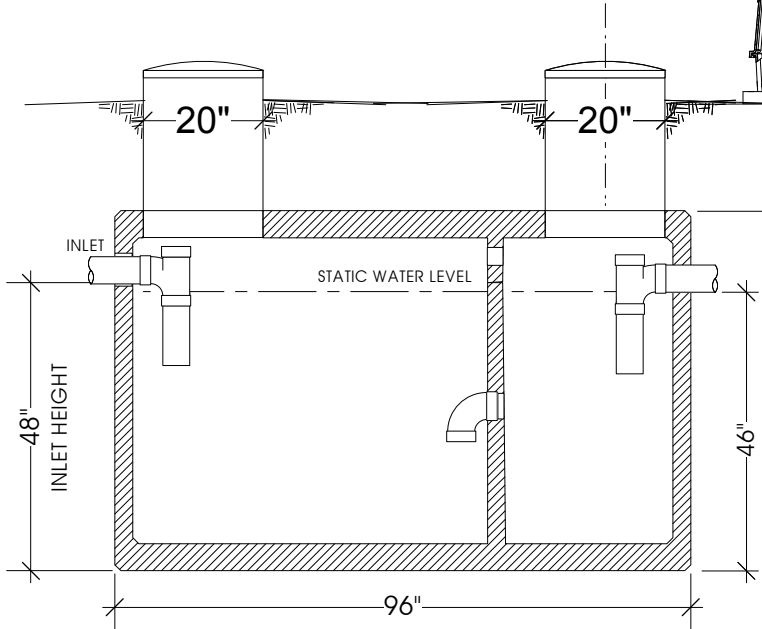
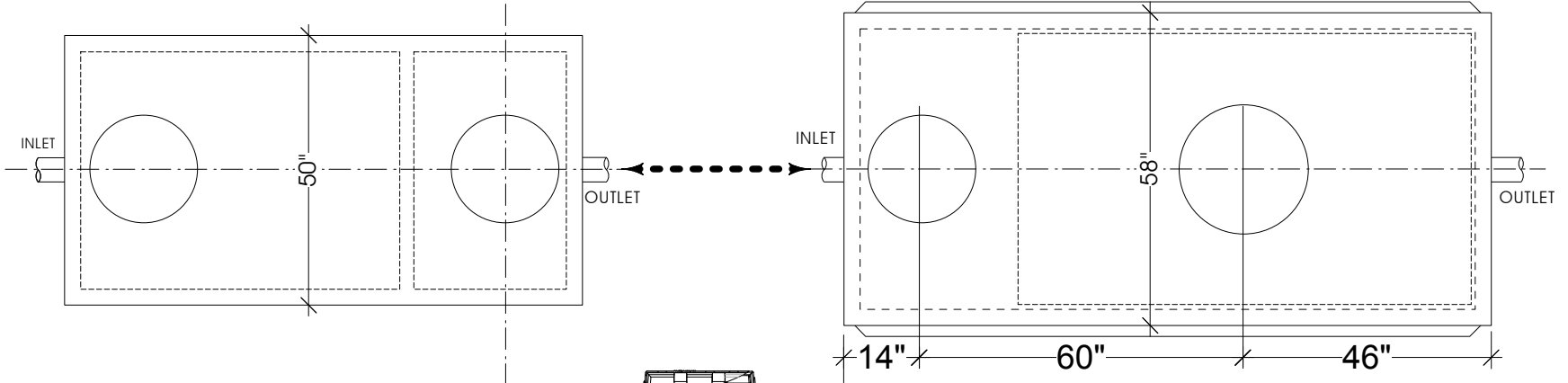
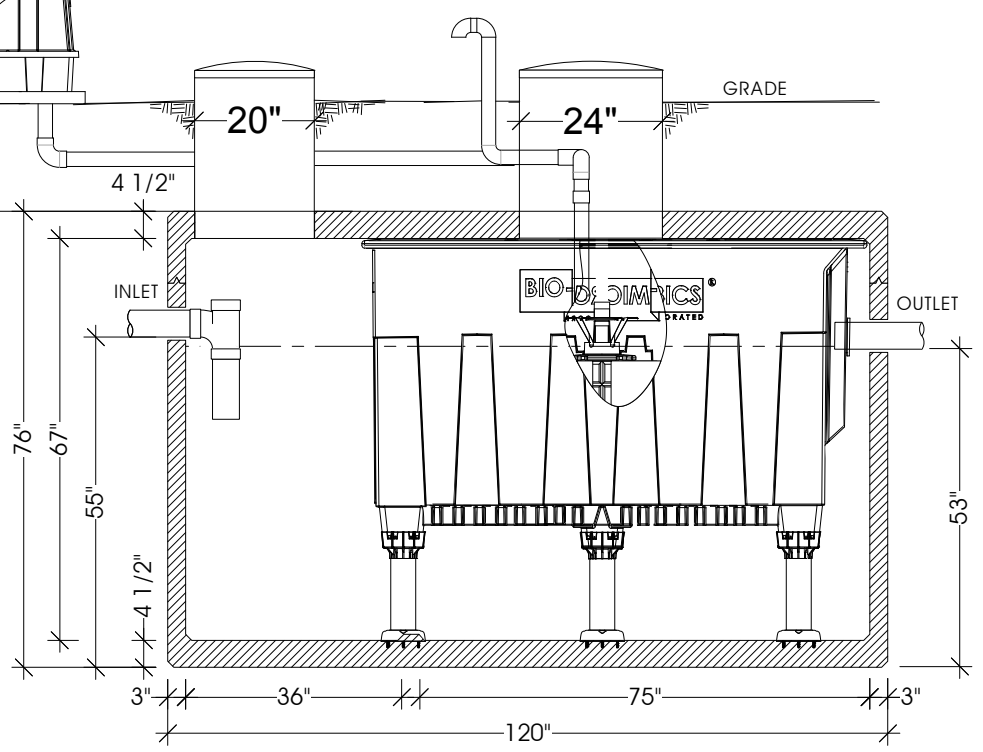


PLAN OF 1.5 MicroFAST UNIT



SECTION MicroFAST FIRST UNIT- 750 GALLONS



SECTION MicroFAST SECOND UNIT IN PYRAMID PRECAST STRUCTURE 1500 GALLONS

NOTES

1. MicroFast UNITS ARE INSTALLED IN-PLANT TO THE MANUFACTURERS INSTRUCTIONS AND GUIDELINES AND BY PERSONNEL INSTRUCTED BY THE MANUFACTURER
2. MicroFast 1.50 UNITS ARE LISTED BY NSF INTERNATIONAL UNDER BIO-MICROBICS
3. THIS UNIT IS RATED FOR USE IN NON-TRAFFIC AREAS
4. MINIMUM FIRST UNIT EXCAVATION SIZE: 9' LENGTH - 5' 6" WIDTH
5. MINIMUM SECOND UNIT EXCAVATION SIZE: 11' LENGTH - 6' 6" WIDTH

MicroFAST® 1.5 FAST Unit
 Mounted in Pyramid Precast Unit

**PYRAMID
 RECAST
 CO INC**

2438 LOCUST AVE. RIALTO, CA PH. (909) 823-4255 FAX (909) 823-8687

* INDUSTRIAL WASTE CLARIFIERS
 * SAND AND GREASE INTERCEPTORS
 * SEPTIC TANKS & DISTRIBUTION BOXES

DRAWING #	PPMF0150 v3
DRAWN BY	SCOTT BENART
SCALE	1:32