

ENFORCER®

E-921CPQ Voice Dialer Manual



When triggered by an alarm system, the ENFORCER Voice Dialer can call up to 5 numbers and deliver a user-recorded 20-second voice message, playing repeatedly for one minute. Each number can contain up to 32 digits, including #, tones, and pauses. The LCD shows the number being dialed at each stage of the dialing process. The receiver can then listen in or broadcast a message to the room occupants or can disarm the system. The same functions are available by remote call in as well as arming the system. The dialer includes a home mode (acting like a door chime when the owner is present) and a panic button. The 105dB built-in siren alarm can be programmed on or off.

Note: For single-line analog telephone systems only.

Table of Contents:

Features	2	Record and Play Back Emergency Message	9
Parts List.....	3	Testing the Auto Dial Function.....	10
Specifications	3	Resetting the Voice Dialer	10
Wiring Diagram.....	3	Line Seizure	10
Overview.....	4	Operating the Voice Dialer.....	10~13
LCD Screen Layout	4	Arming and Disarming the System	10~11
Installing the Voice Dialer	4~5	Panic Button Use	11
Programming the Voice Dialer.....	6~9	Remote Control by Telephone	11~12
Setting and Changing the PIN Number	6	Home Mode Use	13
Setting Emergency Phone Numbers	6~7	Low-Battery Indicator	13
Deleting a Stored Phone Number.....	7	View Function	13
Setting the Siren Function	7	Tips	13
Setting the Auto Dial Function	8	Program Planner.....	14
Setting the Number of Auto Dial Cycles	8	FCC Part 68.....	14
Setting the Number of Call-in Rings	8	Summary Programming/Operation Chart	15
Setting the Entry Delay Time	9	Also Available from SECO-LARM®	15
Setting the Date and Time	9	Troubleshooting	16

Features:

- Trigger-activated alarm and dialer with user-programmable 20-second alarm message
- 16-Digit large display with date/time and function icons
- 3 Triggers (1 N.C., 2 NO/NC) for multiple zone security
- Call in at any time to listen in to room, broadcast to room, arm, and disarm dialer
- Listen in, broadcast messages to room, and/or disarm during dialer call out
- Programmable PIN number and entry delay timing
- 5 Programmable emergency telephone numbers (up to 32 digits each)
- Programmable auto-dialing cycle repeat times
- Home mode function (acts as a door chime when user is at home)
- Panic button
- Back-lit keypad
- Built-in flash memory to protect against system data loss in case of power failure
- Touch-Tone dialing
- Low-battery indicator for backup battery (battery not included)
- DC power input jack (power adapter not included)
- 9V battery backup (battery not included)
- Wall-mountable
- Built-in 105dB alarm (with programmable alarm on/off)
- Built-in auxiliary output for external alarm or siren
- Built-in line seizure

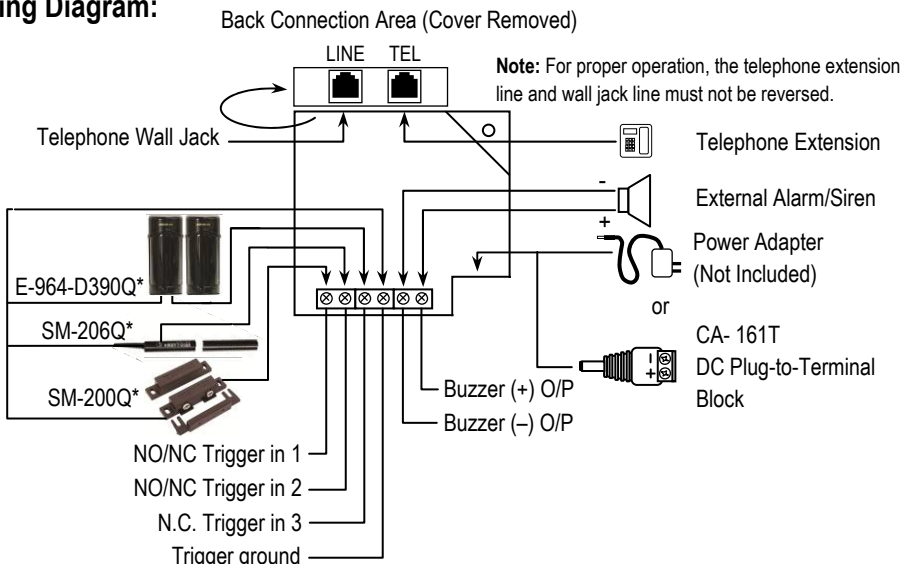
Parts List:

1x Voice dialer unit	1x Telephone cable	1x Remote control instruction card
3x Plastic wall anchors	3x Wall mount screws	1x DC Plug-to-terminal block
1x Wall mounting template	1x User manual	

Specifications:

Operating voltage		9~12 VDC
Current draw Max. (at 12VDC)	Standby	5mA
	Dialing	20mA
	Alarm On	150mA
	Relay On	50mA
	Speaker On	250mA
	Total	480mA
Phone system		For single-line analog systems only
Emergency voice message length (user recorded)		Up to 20s
Programmable emergency phone numbers		5
Maximum digits per telephone number		32
Backup battery type/life (not included)		9VDC/≈20h
Alarm sound level at 12" (30cm)		≥105dB
Trigger inputs	Triggers 1 and 2	NO/NC Trigger (auto-detected)
	Trigger 3	N.C. Trigger
Trigger input timer		≥500ms
Auxiliary output current (max)		125mA
Operating temperature		32°~104°F (0°~40°C)
Storage temperature		-4°~140°F (-20°~60°C)
Weight		11.15-oz (316g)
Dimensions		6 ¹¹ / ₁₆ "x4 ¹¹ / ₁₆ "x1 ¹ / ₂ " (170x119x38 mm)

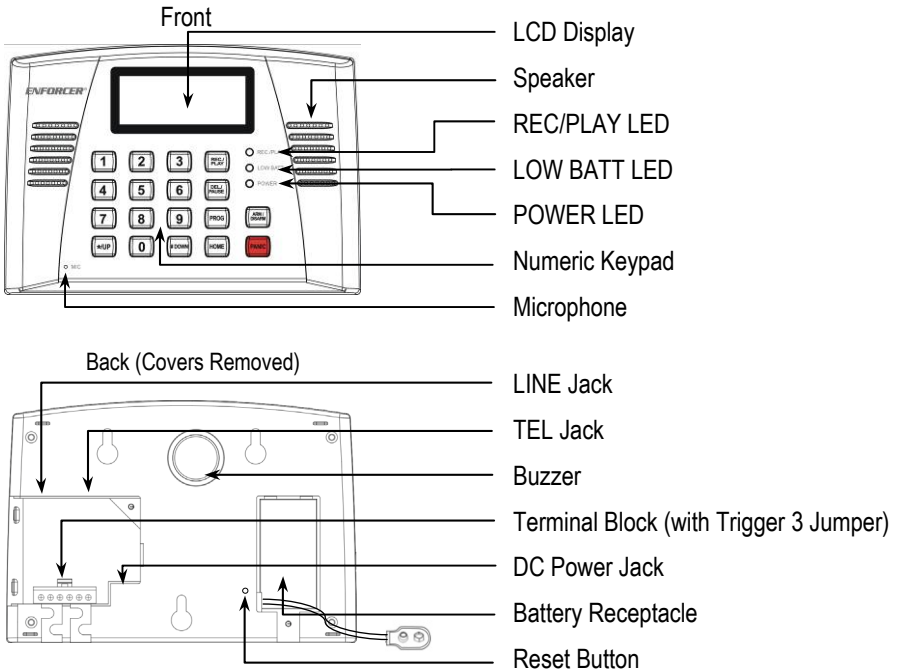
Wiring Diagram:



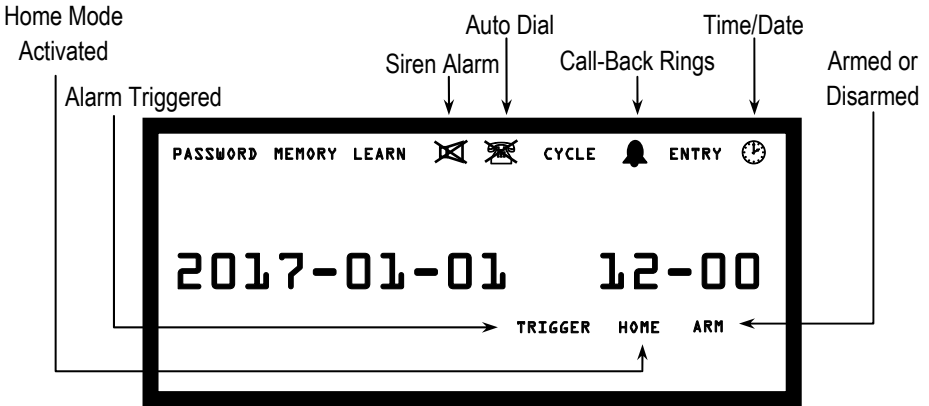
* E-964-D390Q Photobeam Detectors, SM-200Q Magnetic Sensors, and SM-206Q Concealed Magnetic Sensors shown as examples only: For other sensors and products available from SECO-LARM, please visit our website at www.seco-larm.com.

ENFORCER Voice Dialer

Overview:



LCD Screen Layout:



Note: For explanation of symbols, please see **Programming the Voice Dialer** on pages 6-9.

Installing the Voice Dialer:

Note: You can program the telephone numbers and voice messages prior to connecting the power as long as the 9V battery is installed. The standby battery should provide about 20 hours of operation.

Note: The Voice Dialer uses EEPROM to retain memory in the event of a power loss.

Installing the Voice Dialer, continued:

1. Select a location for the dialer near a standard electrical outlet (if user-supplied 12VDC adapter is to be used), a telephone wall jack, and the alarm control panel, but out of sight. The dialer should not be exposed to direct sunlight or rain, and must not be mounted near heat sources such as radiators, heating ducts, or stoves.

2. For wall-mount, use the wall mounting template to drill holes and attach 3 screws into the wall at the desired location. For convenience, 5~6ft (1.5~2m) above the floor is recommended (Fig. 1).

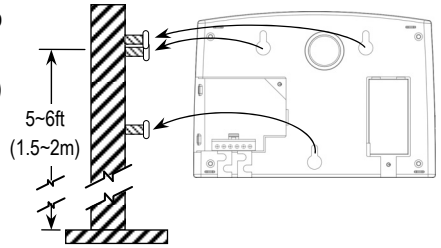


Fig. 1

3. Remove the cable cover and battery cover from the back of the voice dialer (Fig. 2).
4. Install a 9VDC backup battery (not included). Reattach the battery cover.

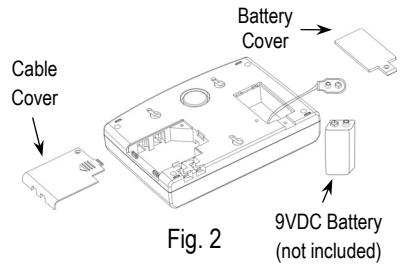


Fig. 2

5. Connect the dialer to up to three detectors or groups of detectors in series using the connection terminals as shown in the wiring diagram (see pg. 3). The dialer can also be connected to three separate alarm control panel outputs of a separate alarm system. When Trigger 3 is used, the jumper connection to ground must be removed.

6. Power:
 - a. If the dialer is to be powered from the alarm control panel, connect the alarm power outputs to the DC Plug-to-terminal block (included) and plug into the dialer's DC power jack (see pg. 3).
 - b. If using a 12VDC adapter (not included), plug the adapter into the dialer's DC power jack.

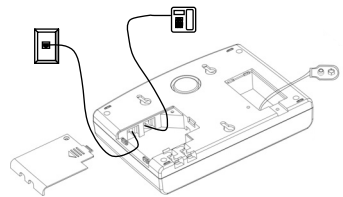


Fig. 3

7. Connect one end of the included telephone cable to an existing Touch-Tone line wall socket, and the other end to the dialer's "LINE" jack. The wall socket line must be connected to the dialer's "LINE" jack for proper operation. Optionally, connect an extension telephone using the telephone's cable (not included) to the "TEL" jack (Fig. 3). Reattach the cable cover.

8. If an external alarm is desired, connect according to the wiring diagram (see pg. 3).
9. For wall installation, place the unit over the heads of the screws installed in step 2 (Fig. 1) and slide down. Check that the unit is firmly attached and tighten or loosen the screws as needed.

10. Once all connections are made, the dialer is ready to be programmed.

Programming the Voice Dialer:

The setup mode may only be accessed when the dialer is in standby mode. If no key is pressed within 15 seconds, the dialer will automatically exit the setup mode.

Setting and Changing the PIN Number

1. Enter the current PIN number (factory preset PIN number is '000'), and press the [PROG] button once. 'PASSWORD' will flash on the LCD.
2. Press the [ARM/DISARM] button to accept.
3. Enter a new PIN number (3-6 digits) followed by the [ARM/DISARM] button to confirm.
4. Press the [# / DOWN] or [* / UP] button to select other setup categories or press the [PROG] button until the programming icons disappear to exit the setup mode.

Note: If the PIN number is forgotten, press and hold the [PROG] button and use a pen or paper clip to press the [RESET] button located near the battery receptacle cover on the back of the unit and release. The unit will return to the factory preset PIN number (000). All other user programmed settings except the date and time will be retained.

Setting Emergency Phone Numbers

1. Enter the PIN number and press the [PROG] button twice or until "MEMORY" flashes on the LCD screen.
2. Press the [ARM/DISARM] button to accept.
3. Press the [# / DOWN] or [* / UP] button to select one of the number locations 1-5.

Note: The 5 number locations represent the order in which the numbers will be dialed in the case of an alarm.

4. Enter the number to store including any area codes or dialing prefixes if needed (up to 32 digits, although only the last 16 digits can be shown on the LCD display) using the keypad followed by the [ARM/DISARM] button to accept and store the number.

Note: If needed, a 4-second 'pause' can be entered by pressing and holding the [DEL/PAUSE] button for 2 seconds until the letter 'F' appears on the LCD screen. A '#' or '*' can also be entered by pressing, and holding for two seconds, the [# / DOWN] or [* / UP] buttons respectively. The '#' sign shows as 'J' and the '*' sign shows as 'L' on the LCD screen.

Example 1 – To store a number with area code 1-214-555-2858 and an office extension 205 (where the called number requires a 2-second pause before the extension): After scrolling to the desired number location, enter '12145552858,' press the [DEL/PAUSE] button for 2 seconds until the letter 'F' appears on the LCD screen, enter '205' and press the [ARM/DISARM] button.

Programming the Voice Dialer, continued:

Example 2 – To store a number with area code 1-949-555-1234, and an office extension #200 (where the called number requires a 2-second pause before the extension): After scrolling to the desired number location, enter '19495551234,' press the [DEL/PAUSE] button for 2 seconds until 'F' appears on the LCD screen, press the [#/DOWN] button for 2 seconds until the 'J' appears on the LCD screen, enter '200,' and press the [ARM/DISARM] button.

Example 3 – To store a local number 555-2858: After scrolling to the desired number location, enter '5552858' and press the [ARM/DISARM] button.

5. Repeat for the other numbers to be stored (up to 5 total).
6. Press the [#/DOWN] or [* /UP] button to select other setup categories or press the [PROG] button until the programming icons disappear to exit the setup mode.

Note: If the dialer is programmed to call a voice pager service which requires operator assistance, the service should be notified in advance regarding the meaning of the message. Consult local authorities concerning the permissibility of automatically dialing their emergency numbers before programming.

Deleting a Stored Phone Number


1. Enter the PIN number and press the [PROG] button twice or until "MEMORY" flashes on the LCD screen.
2. Press the [ARM/DISARM] button to accept.
3. Press the [# /DOWN] or [* /UP] button to select the number you wish to delete.
4. Press the [DEL/PAUSE] button to delete the number.
5. Press the [# /DOWN] or [* /UP] button to select other setup categories or press the [PROG] button until the programming icons disappear to exit the setup mode.

Learn

This function is unused.

Setting the Siren Function

This setting allows the user to choose between an audible alarm when triggered, or a 'silent alarm' while dialing the emergency numbers. The factory default is "ON".

1. Enter the PIN number and press the [PROG] button four times or until the alarm icon () flashes on the LCD screen.
2. Press the [ARM/DISARM] button to accept. The dialer will "beep" once.
3. Press the [# /DOWN] or [* /UP] button to select either "SOUND ON" or "SOUND OFF" and press the [ARM/DISARM] button to accept.
4. Press the [# /DOWN] or [* /UP] button to select other setup categories or press the [PROG] button until the programming icons disappear to exit the setup mode.

Programming the Voice Dialer, continued:

Setting the Auto Dial Function

The user can choose whether or not the dialer will dial the emergency numbers when triggered. The factory default is "ON".

1. Enter the PIN number and press the [PROG] button five times or until the phone icon (☒) flashes on the LCD screen.
2. Press the [ARM/DISARM] button to accept.
3. Press the [# / DOWN] or [* / UP] button to select either "ON" or "OFF" and press the [ARM/DISARM] button to accept. The dialer will "beep" once.
4. Press the [# / DOWN] or [* / UP] button to select other setup categories or press the [PROG] button until the programming icons disappear to exit the setup mode.

Note:

1. When the dialer is in standby mode and the (☒) icon is ON, the auto dial is disabled.
2. When the dialer is in standby mode and the (☒) icon is OFF, the auto dial is enabled.

Setting the Number of Auto Dial Cycles

This can be set from 1~5 cycles. The factory default is 3 cycles, meaning that the voice dialer will dial each programmed number 3 times.

1. Enter the PIN number and press the [PROG] button six times or until "CYCLE" flashes on the LCD screen.
2. Press the [ARM/DISARM] button to accept.
3. Press the [# / DOWN] or [* / UP] button to select your choice of 1-5 cycles and press the [ARM/DISARM] button to accept. The dialer will "beep" once.
4. Press the [# / DOWN] or [* / UP] button to select other setup categories or press the [PROG] button until the programming icons disappear to exit the setup mode.

Setting the Number of Call-in Rings

This sets the number of call-in rings after which the voice dialer will answer. The factory default is 5 rings, but can be user programmed for 3, 5, 7, or 10 rings.

1. Enter the PIN number and press the [PROG] button seven times or until the bell icon (🔔) flashes on the LCD screen.
2. Press the [ARM/DISARM] button to accept.
3. Press the [# / DOWN] or [* / UP] button to select 3, 5, 7, or 10 and press the [ARM/DISARM] button to accept. The dialer will "beep" once.
4. Press the [# / DOWN] or [* / UP] button to select other setup categories or press the [PROG] button until the programming icons disappear to exit the setup mode.

Programming the Voice Dialer, continued:

Setting the Entry Delay Time

This allows the user to set the length of time before the alarm will sound, to allow time to disable the alarm after normal entry. The factory default is 20 seconds, but can be user programmed for 0, 5, 10, 15, or 20 seconds.

1. Enter the PIN number and press the [PROG] button eight times or until "ENTRY" flashes on the LCD screen.
2. Press the [ARM/DISARM] button to accept.
3. Press the [# / DOWN] or [* / UP] button to select 0, 5, 10, 15, or 20 seconds and press the [ARM/DISARM] button to accept. The dialer will "beep" once.
4. Press the [# / DOWN] or [* / UP] button to select other setup categories or press the [PROG] button until the programming icons disappear to exit the setup mode.

Setting the Date and Time

1. Enter the PIN number and press the [PROG] button nine times or until the clock icon (🕒) flashes on the LCD screen.
2. Press the [ARM/DISARM] button to accept.
3. The date and time will appear on the LCD screen as 5 sets of numbers representing the year, month, date, hour, and minute respectively. The first set of numbers (year) will be flashing, indicating that this can now be changed.
4. Press the [# / DOWN] or [* / UP] button to select the correct number for the year and press the [ARM/DISARM] button to accept and move to the next position. Repeat for each position until complete.
5. Press the [PROG] button until the programming icons disappear to exit the setup mode.

Note: Time is shown using a 24 hour clock.

Record and Play Back Emergency Message

1. Enter the PIN number and press the [REC/PLAY] button. Speak your message into the microphone of the voice dialer. The maximum message length is 20 seconds. When finished, press [REC/PLAY] again.

Note: You may wish to include instructions for disarming the unit in your message since you may not remember how to do so at a later date when you receive a message that the alarm has been triggered.

A suggested message could be, "{Your name}'s security alarm has been activated. Please enter a command, 1# to monitor the room, 2# to broadcast a message to the room, 3# to end this call, or 6# to disarm the system."

2. To listen to a message, press the [REC/PLAY] button.

Testing the Auto Dial Function:

To test the auto dial function, while in standby mode, press and hold the [PROG] button for at least two seconds. When you hear a 'beep' tone, enter the memory location (1~5) of the number you wish to test. The voice dialer should then dial the chosen number.

Resetting the Voice Dialer:

To reset the Voice Dialer, press and hold the [PROG] button and use a pen or paper clip to press the [RESET] button located near the battery receptacle cover on the back of the unit and release. The unit will return to the factory preset PIN number (000). All other user programmed settings except the date and time will be retained.

Line Seizure:

If the telephone line that the dialer is connected to is in use, the dialer will seize the line, disconnecting the current call, to dial out. This ensures that the dialer is able to dial emergency numbers promptly.

Note: For proper operation, the line to the wall jack must be connected to the "LINE" jack of the dialer. A telephone extension, if used, may be connected only to the "TEL" jack of the dialer.

Operating the Voice Dialer:

Arming and Disarming the System:

1. To **arm the system**, enter the PIN number and press the [ARM/DISARM] button.

The dialer will sound three short "beeps" and the words "ARM" will appear on the LCD screen. After 60 seconds, there will be a single "beep" tone to indicate that exit delay time has passed and the alarm is now fully armed.

During the 60-second delay time after the system is armed, if the system detects trigger 3 indicating an open door or window, a "beep" tone sounds for 5 seconds, the reminder "CLOSE PLEASE" appears on the LCD screen, and the word "TRIGGER" flashes. If, after 60 seconds, that door or window is not closed, the alarm will sound and auto dialing will commence.

After the delay, when the system is fully armed, if a door or window connected to the alarm is opened, the LCD screen will flash the word "TRIGGER". After the adjustable entry delay time has passed, the siren will begin to sound (30 seconds on and 30 seconds off) and auto dialing will commence according to the programmed sequence and cycle times.

Operating the Voice Dialer, continued:

Note: When the siren has been programmed to “SOUND OFF,” the siren will not sound and the dialing will commence silently after the delay time has passed. When the call is answered, the receiver will hear the user-recorded 20-second emergency message.

Note: If the voice dialer is not connected to a working telephone line, the dialer will “beep” 4 times and the siren will begin to sound without attempting to continue dialing out (this overrides the “SOUND OFF” setting).

2. To **disarm the system**, enter the PIN number and press the [ARM/DISARM] button.

The dialer will sound a long “beep” and the word “ARM” will disappear from the LCD screen.

Panic Button Use

1. When the [PANIC] button is pressed, the siren will sound immediately and auto dialing will commence without delay. If the siren has been programmed to “SOUND OFF” the siren will not sound, but silent dialing will commence.
2. To cancel the alarm and stop auto dialing, enter the PIN number and press the [ARM/DISARM] button. The dialer is now disarmed.

Remote Control by Telephone

The system can be remotely controlled and monitored through any Touch-Tone phone, including mobile phones. The user may either arm or disarm the system, listen in on any activity in the room, or broadcast a message to those in the room.

1. **REMOTE CONTROL WHEN ALARM IS ACTIVATED**

When an alarm has been activated and the voice dialer dials the pre-programmed emergency numbers, the person who answers the call will hear the pre-recorded message and may press one of the following function codes at any time to control the system remotely:

Function	Press key code
Listen in	1 #
Broadcast	2 #
End call	3 #
Disarm system	6 #

The user should hear a “beep” in response. If not, enter the function code again.

2. **REMOTE CONTROL BY USER CALL-IN (CALL BACK)**

- A. Using a mobile phone or any Touch-Tone phone, dial the phone number that the voice dialer is connected to. The voice dialer will answer and “beep” once after the number of rings in the pre-programmed call-in ringer detect cycle (3, 5, 7, or 10 rings, see pg. 8).
- B. Enter the PIN Number on the phone’s keypad. The dialer will “beep” twice if the correct code has been entered. If a wrong code is entered, the dialer will disconnect automatically and the user must dial in again.

Operating the Voice Dialer, continued:

Remote Control by Telephone – Remote Control by User Call-In (Call Back), continued:

- C. Press one of the following function codes to control the system remotely:

Function	Press key code
Listen in	1 #
Broadcast	2 #
Arm system	5 #
Disarm system	6 #

The user should hear a “beep” in response. If not, enter the function code again.

Note: Should the user have difficulty activating functions remotely by telephone, there may be too much ambient noise interference. Try pressing the code key again, or move to a quieter location as ambient noise above 68dB may affect the auto dialer’s ability to detect the tone signal.

3. FUNCTION EXPLANATIONS

LISTEN IN – Pressing [1 #] allows a user to hear sound in the room for 50 seconds. A “beep” will sound at 30 seconds to remind the user that the listen in time will soon end. Pressing [1 #] again will reset the 50-second period, and entering any other key code will end monitoring and perform the function. If there is no other key press, the call will disconnect at the end of the 50 seconds.

BROADCAST – Pressing [2 #] allows a user to speak to the person in the room for 50 seconds. A ‘beep’ will sound at 30 seconds to remind the user that the time will soon end. Pressing [2 #] again will reset the 50-second period and entering any other key code (such as [1 #], Room Monitor) will end broadcasting and perform the other related function. If there is no other key press, the call will disconnect at the end of the 50 seconds.

Note: Alternating between “Listen In” and “Broadcast” may be useful for a “conversation” with the room occupant, but a user cannot speak and listen at the same time.

END CALL - Pressing [3 #] will end the call.

ARM SYSTEM – Pressing [5 #] during a user callback will arm the system, confirming with three short “beeps,” and automatically hang up. If there are 5 rapid “beeps” after three short “beeps,” it means a door/window is not closed. The dialer will then give 5 seconds to disarm the system.

DISARM SYSTEM – Pressing [6 #] will disarm the system and automatically hang up.

Note: If the user enters an incorrect password or key code, the voice dialer will sound 5 “beeps” and automatically hang up.

Operating the Voice Dialer, continued:

Home Mode Use

To turn off the alarm function and use the dialer as a door chime, set the dialer to “Home” mode. A chime will ring any time one of the sensors is triggered.

To activate the “Home” mode:

1. Press the [HOME] button once. One chime will sound and the word ‘HOME’ will appear on the LCD screen.
2. After 60 seconds, another chime indicates that the voice dialer is now in the “Home” mode.
3. When a sensor is activated, the voice dialer will chime twice.
4. If the panic button is pressed, the voice dialer will sound a 30-second alarm and start the dialing sequence to the programmed emergency numbers.

To deactivate the “Home” mode, simply press the [HOME] button.

Note: Arming the system deactivates the “Home” mode. After disarming, reactivate the “Home” mode if desired.

Low-Battery (LOW BATT.) Indicator

When the charge level of the 9VDC backup battery (not included) is low, the “LOW BATT.” LED will flash once every 1.5 seconds. Replace the battery in order to continue providing functionality during a temporary disruption in power.

Note: In order to avoid potential damage due to battery leakage, do not leave a low battery in the unit. Also, be sure to remove the battery if the unit is unused for a period of time.

View Function

To view the last 5 sensor trigger events, while in standby mode press the [# / DOWN] button.

To view stored emergency telephone numbers, while in standby mode press the [* / UP] button.

Note: After 10 seconds of inactivity, the voice dialer will automatically exit the view mode and return to standby.

Tips:

1. Make sure that the full telephone numbers have been stored as they would normally be dialed from a local phone.
2. The voice dialer is only suitable for single-line analog telephone systems. It is not compatible with fax machines, VOIP lines, or PBX systems.
3. Set the number of Call-in rings to be less than the voicemail or message answer point.

ENFORCER Voice Dialer

Program Planner:

Use these charts during setup to record phone numbers and sensor locations for future reference. It is recommended that you use a pencil during setup and redo it in ink afterwards. The user should keep in a safe, easily accessible location and a copy should be retained by the installer.

Program: Numbers

Date:

NUMBER PRIORITY	TELEPHONE NUMBER (include area code and dialer prefix as needed)	NAME OF PARTY TO BE REACHED
1		
2		
3		
4		
5		

Installation: Triggers

Date:

TRIGGER	GENERAL DESCRIPTION	SENSOR LOCATIONS
1		
2		
3		

FCC Part 68:

This equipment complies with Part 68 of the FCC rules and the requirements adopted by the ACTA. On the bottom of the device of this equipment is a label that contains, among other information, a product identifier in the format US: 7M7TE02BE921CPQ and REN:0.19B for this equipment.

This equipment uses the following USOC jacks: RJ-11 Jacks.

A plug and jack used to connect this equipment to the premises wiring and telephone network must comply with the applicable FCC Part 68 rules and requirements adopted by the ACTA. A compliant telephone cord and modular plug is provided with this product. It is designed to be connected to a compatible modular jack that is also compliant. See installation instructions for details.

REN (RINGER EQUIVALENT NUMBERS) STATEMENT

Notice: The Ringer Equivalence Number (REN) assigned to each terminal device provides an indication of the maximum number of terminals allowed to be connected to a telephone interface. The termination on an interface may consist of any combination of devices subject only to the requirement that the sum of the Ringer Equivalence Numbers of all the devices does not exceed 5.

If this equipment US: 7M7TE02BE921CPQ causes harm to the telephone network, the telephone company will notify you in advance that temporary discontinuance of service may be required. But if advance notice isn't practical, the telephone company will notify the customer as soon as possible. Also, you will be advised of your right to file a complaint with the FCC if you believe it is necessary.

The telephone company may make changes in its facilities, equipment, operations or procedures that could affect the operation of the equipment. If this happens, the telephone company will provide advance notice in order for you to make necessary modifications to maintain uninterrupted service.

If trouble is experienced with this equipment product Model:E-921CPQ, for repair or warranty information, please contact SECO-LARM U.S.A., Inc. If the equipment is causing harm to the telephone network, the telephone company may request that you disconnect the equipment until the problem is resolved.

Connection to party line service is subject to state tariffs. Contact the state public utility commission, public service commission or corporation commission for information.

If your home has specially wired alarm equipment connected to the telephone line, ensure the installation of this US: 7M7TE02BE921CPQ does not disable your alarm equipment. If you have questions about what will disable alarm equipment, consult your telephone company or a qualified installer.

WHEN PROGRAMMING EMERGENCY NUMBERS AND/OR MAKING TEST CALLS TO EMERGENCY NUMBERS:

1. Remain on the line and briefly explain to the dispatcher the reason for the call.
2. Perform such activities in the off-peak hours, such as the early morning or late evening.

Summary Programming/Operation Chart:

1. Setting/Changing PIN Number (see pg. 6)

Current PIN	[PROG]	[ARM/DISARM]	New PIN	[ARM/DISARM]	[PROG] x9
-------------	--------	--------------	---------	--------------	-----------

2. Setting Emergency Telephone Numbers (see pgs. 6-7)

PIN	[PROG] x2	[ARM/DISARM]	[#/DOWN] or [*UP]	Enter Phone #	[ARM/DISARM]	[PROG] x8
-----	-----------	--------------	-------------------	---------------	--------------	-----------

3. Deleting a Stored Telephone Number (see pg. 7)

PIN	[PROG] x2	[ARM/DISARM]	[#/DOWN] or [*UP]	[DELETE/PAUSE]	[ARM/DISARM]	[PROG] x8
-----	-----------	--------------	-------------------	----------------	--------------	-----------

4. Setting the Siren Function (see pg. 7)

PIN	[PROG] x4	[ARM/DISARM]	[#/DOWN] or [*UP]	[ARM/DISARM]	[PROG] x6
-----	-----------	--------------	-------------------	--------------	-----------

5. Setting the Auto Dial Function (see pg. 8)

PIN	[PROG] x5	[ARM/DISARM]	[#/DOWN] or [*UP]	[ARM/DISARM]	[PROG] x5
-----	-----------	--------------	-------------------	--------------	-----------

6. Setting the Number of Auto Dial Cycles (see pg. 8)

PIN	[PROG] x6	[ARM/DISARM]	[#/DOWN] or [*UP]	[ARM/DISARM]	[PROG] x4
-----	-----------	--------------	-------------------	--------------	-----------

7. Setting the Number of Call-in Rings (see pg. 8)

PIN	[PROG] x7	[ARM/DISARM]	[#/DOWN] or [*UP]	[ARM/DISARM]	[PROG] x3
-----	-----------	--------------	-------------------	--------------	-----------

8. Setting the Entry Delay Time (see pg. 9)

PIN	[PROG] x8	[ARM/DISARM]	[#/DOWN] or [*UP]	[ARM/DISARM]	[PROG] x2
-----	-----------	--------------	-------------------	--------------	-----------

9. Setting the Date/Time (see pg. 9)

PIN	[PROG] x9	[ARM/DISARM]	[#/DOWN] or [*UP]	[ARM/DISARM]	Repeat for each position	[PROG] x2
-----	-----------	--------------	-------------------	--------------	--------------------------	-----------

10. Record Emergency Message (see pg. 9)

PIN	[REC/PLAY]	Speak message (up to 20 seconds)	[REC/PLAY]
-----	------------	----------------------------------	------------

11. Playback Message (see pg. 9)

[REC/PLAY]

12. Test Auto Dial Function (see pg. 10)

(In Standby Mode)	Press and Hold [PROG]	[#/DOWN] or [*UP]	Check to see if number is dialed
-------------------	-----------------------	-------------------	----------------------------------

13. Arm/Disarm System (see pgs. 10-11)

PIN	[ARM/DISARM]
-----	--------------

14. Remote Control by Telephone (see pgs. 11-12)

Receive Call	Press Key Code on Telephone Keypad
Dial Voice Dialer Number	Press Key Code on Telephone Keypad

15. View (see pg. 13)

Last 5 Sensor Trigger Records	(In Standby Mode)	[#/DOWN]
Stored Emergency Phone Numbers	(In Standby Mode)	[*UP]

16. Activate/Deactivate Home Mode (see pg. 13)

(In Standby Mode)	[HOME]
-------------------	--------

Also Available from SECO-LARM®:

LED Strobe Light



SL-1301-BAQ

HDMI Extender over Single Cat5e/6



MVE-AH030AQ

CBA Wireless Doorbell



AC-132Q

Electric Door Strike for Metal doors



SD-995C

Photobeam Sensor



E-931-S35RRQ

4-in-1 HD Fixed Rollerball Camera



EV-Y2201-A2WQ

For a complete listing of SECO-LARM products, please visit us online at www.seco-larm.com.

Troubleshooting:

Dialer will not arm/disarm	<ul style="list-style-type: none">• Try re-entering the PIN number to ensure that you have entered it correctly.• While pressing and holding the [PROG] button, use a pen or paper clip to press the [RESET] button on the back of the dialer. This sets the PIN number to the default (000). Then try to arm/disarm again.
Dialer will not dial out	<ul style="list-style-type: none">• Make sure that the telephone line is working.• Make sure that you have programmed at least one telephone number into the unit and that the full number has been stored.• Make sure that the system is in Auto Dial mode.• Ensure that the line to the wall jack is plugged into the dialer's "LINE" jack, and any phone extension connected to the dialer is plugged into the dialer's "TEL" jack.
Unit doesn't respond to a call-back	<ul style="list-style-type: none">• Check to see if another unit (fax or answering machine) could be answering the call and remove the other unit.• Adjust the call-in ring detect setting so the dialer will answer.
Difficulty in activating 'room monitor' by telephone remote control	<ul style="list-style-type: none">• Try pressing the code key again.• Move to a quieter location as ambient noise may affect the dialer's ability to detect the tone signal.

NOTE: While the system can provide valuable protection to home and property when properly installed, it cannot guarantee complete protection against intrusion. SECO-LARM is not responsible for any losses or damage which may occur during the use of this product.

IMPORTANT: Users and installers of this product are responsible for ensuring this product complies with all national, state, and local laws and statutes related to monitoring and recording audio and video signals. SECO-LARM will not be held responsible for the use of this product in violation of any current laws or statutes.

WARRANTY: This SECO-LARM product is warranted against defects in material and workmanship while used in normal service for one (1) year from the date of sale to the original customer. SECO-LARM's obligation is limited to the repair or replacement of any defective part if the unit is returned, transportation prepaid, to SECO-LARM. This Warranty is void if damage is caused by or attributed to acts of God, physical or electrical misuse or abuse, neglect, repair or alteration, improper or abnormal usage, or faulty installation, or if for any other reason SECO-LARM determines that such equipment is not operating properly as a result of causes other than defects in material and workmanship. The sole obligation of SECO-LARM and the purchaser's exclusive remedy shall be limited to the replacement or repair only, at SECO-LARM's option. In no event shall SECO-LARM be liable for any special, collateral, incidental, or consequential personal or property damage of any kind to the purchaser or anyone else.

NOTICE: The SECO-LARM policy is one of continual development and improvement. For that reason, SECO-LARM reserves the right to change specifications without notice. SECO-LARM is also not responsible for misprints. All trademarks are the property of SECO-LARM U.S.A., Inc. or their respective owners. Copyright © 2017 SECO-LARM U.S.A., Inc. All rights reserved.

SECO-LARM® U.S.A., Inc.

16842 Millikan Avenue, Irvine, CA 92606
Phone: (949) 261-2999 | (800) 662-0800

Website: www.seco-larm.com
Email: sales@seco-larm.com



ML_E-921CPQ_171002.docx